

DATE: 21 October 2015
TO: Executive of Council
FROM: Annette Revet, University Secretary
RE: Meeting of 28 October 2015

A meeting of Executive of Council is scheduled for Wednesday 28 October 2:30 - 4:30 p.m. in the AH 527. As per Section 4.6.2 of the Council Rules and Regulations Executive of Council meetings shall be closed except to persons invited to attend and all members of Council who choose to attend as guests.

AGENDA

1. **Approval of the Agenda**
2. **Approval of the Minutes of Meeting 23 September** - *circulated with the Agenda*
3. **Remarks from the Chair**
4. **Report of the University Secretary**
5. **Reports from Committees of Council**
 - 5.1 Council Committee on Research, Appendix 1
 - 5.2 Council Committee on Undergraduate Admissions and Studies – Appendix 2
6. **Graduand Lists**
 - 6.1 Graduand Lists for Approval - Omnibus Motion – *circulated at the meeting - please return all copies*
 - 6.1.1 Faculty of Arts
 - 6.1.2 Faculty of Graduate Studies and Research
 - 6.1.3 Faculty of Social Work
 - 6.1.4 Centre for Continuing Education
 - 6.1.5 Faculty of Education
7. **Business Arising from the Minutes**
8. **Reports from Faculties and Other Academic Units**
 - 8.1 Arts
 - 8.2 Business Administration
 - 8.3 Education
 - 8.4 Engineering and Applied Science
 - 8.5 Fine Arts
 - 8.6 Graduate Studies and Research
 - 8.7 Kinesiology and Health Studies
 - 8.8 Nursing
 - 8.9 Science
 - 8.10 Social Work
 - 8.11 Centre for Continuing Education
 - 8.12 La Cité universitaire francophone
 - 8.13 Library
 - 8.14 Federated Colleges
 - 8.14.1 Campion College
 - 8.14.2 First Nations University of Canada
 - 8.14.3 Luther College
9. **Other Business**
 - 9.1 Internationalization Plan, Appendix - Appendix 3
10. **Adjournment**

**REPORT TO
EXECUTIVE OF COUNCIL
FROM THE COUNCIL COMMITTEE ON RESEARCH**

1. Item for Approval

The Council Committee on Research has approved the following policy and hereby recommends for approval.

1.1 Research Chairs Policy – see Attachment A to report

Motion: The Council Committee on Research recommends to Executive of Council that the Research Chairs Policy be recommended to Senate for approval and further recommendation to the Board of Governors for final approval.

Rationale: The Research Chairs Policy is a new policy that governs the creation and renewal of Research Chairs. The policy ensures the strategic, coherent, and principled selection of candidates and research areas that advance the strategic priorities of the University.

2. Items for Information

2.1 Research Impact Subcommittee

K. Montgomery is on sabbatical, and N.Onder has volunteered to fill the position of Chair on the Research Impact Subcommittee.

2. Strategic Research Plan

The planning process for a new Strategic Research Plan was presented to members of CCR for their feedback. CCR endorsed the process that will be used to develop the University Strategic Research Plan for 2016-2021.

2.3 Research Clusters

The Health Equity Cluster has been renamed. The new name is: Integrated Human Health: Equity, Disease and Prevention.

2.4 Research Trust Fund Process

The process for administering funds under the Research Trust Fund has been altered to align with current practices for administering internal funds. Successful applicants will have a new FOAPAL opened for their funds, so that researchers are responsible for their own accounts.

2.5 Canada First Research Excellence Fund

A group of researchers in the areas of carbon capture, use and storage including technical, social science, public policy, health and environment areas of research have been asked to help move a proposal forward to the Canada First Research Excellence Fund. The Letter of Intent is due November 9; if invited to submit a full application, it will be due March 2016.

2.6 CFI Subcommittee

The CFI Subcommittee has met twice; two applications were recommended in May 2015 and two more applications were recommended in September 2015.

October 6, 2015

**REPORT TO EXECUTIVE OF COUNCIL
OCTOBER 6, 2015
FROM THE COUNCIL COMMITTEE ON RESEARCH**

1. ITEM FOR DECISION

1.1 Research Chairs Policy

MOTION: The Council Committee on Research recommends to Executive of Council that the Research Chairs Policy be recommended to Senate for approval and further recommendation to the Board of Governors for final approval.:

Background:

The Research Chairs Policy is a new policy that governs the creation and renewal of Research Chairs. The policy ensures the strategic, coherent, and principled selection of candidates and research areas that advance the strategic priorities of the University.

Since no policy is currently in place regarding the allocation and establishment of Research Chairs, the policy provides guidance on the creation of new Research Chairs as well as filling and terminating existing Research Chairs. The policy clarifies reporting requirements and subsequent evaluation.

Communications: Once approved by the Board of Governors, the policy will be posted on the policy website.

October 6, 2015
Submitted by: Andrei Volodin, Chair
Prepared by: J.Speed, Research Office

Research Chairs (DRAFT)

Number:	RCH-0XX-00X
Audience:	All members of the University's research community
Last revised:	
Owner:	Provost and Vice President (Academic) and Vice President (Research)
Approved by:	Board of Governors
Contact:	Vice President (Research) – 306-585-5184

Introduction

This policy applies to all employees (faculty, staff, and student employees) of the University's research community.

The role played by Research Chairs in creating and mobilizing knowledge through research excellence is highly valued by the University of Regina. The University is committed to ensuring the highest standards of research in its community as may be recognized through the creation and renewal of Research Chairs.

This policy supports strategic, coherent, and principled selection of candidates and research areas that advance the strategic priorities of the University.

The University of Regina Act (S33-2d) states that "*the senate may authorize on academic grounds the establishment of any...chair...and recommend on these matters to the board.*" Thus, the authorization and confirmation of the establishment of Research Chairs are considered to be within the purview of University Senate, as defined by the processes outlined in this policy. The Act (S62e) goes on to state that "*the board may make provision for the establishment and maintenance of...chairs...as have been determined by the senate.*"

Definitions

- **Chairholder** – an employee of the University who holds a Research Chair
- **Research** – includes scholarship, research, and creative or equivalent professional activities
- **Researcher** – an employee or student of the University who is engaged in research; one who performs diligent and systematic inquiry into a subject to discover or revise facts, theories, etc.
- **Research Chair** – an honorary title bestowed by the University as a signal to internal and external parties that a researcher has been recognized for research excellence in a targeted discipline or research area
 - **Canada Research Chair (CRC)** – an employee of the University who holds a CRC as a result of a Government of Canada initiative; institutions receive an allocation of Research Chairs based on the amount of research funding received from the Tri-Council
 - **Endowed Research Chair** – an employee of the University whose research is supported by individual and/or corporate partners and/or professional or disciplinary associations. Endowed Research Chairs may be created to recruit, retain, and recognize renowned researchers in sponsored disciplines or research areas
 - **Faculty Research Chair** – an employee of the University whose research is supported by a University Faculty. A Faculty Research Chair may be created, as funds permit, to support research of strategic

importance to the University and to enhance recruitment and retention of faculty whose research expertise is of strategic importance to the University

- **Industrial Research Chair** – an employee of the University who holds targeted NSERC funding to support development and engagement in major research endeavours of interest to industry
- **Sponsored Research Chair** – sponsored and named by individual and/or corporate partners and/or professional or disciplinary associations for a defined duration that is governed by the amount of funding available and activities included in the professorship. Sponsored Chairs that include a research focus are administered under the same conditions as a Research Chair.
- **Research record** – data, results, or facts that are a result of scientific or academic inquiry (research); includes, but is not limited to, research proposals, notes, laboratory records (electronic and physical), abstracts, theses, progress reports, internal reports, presentation material, journal articles, and publications.
- **Sponsor** – the funding agency or entity who provides financial support for the creation and maintenance of a Research Chair
- **Tri-Council** – CIHR (Canadian Institutes of Health Research), NSERC (Natural Sciences and Engineering Research Council of Canada), and SSHRC (Social Sciences and Humanities Research Council of Canada)

Policy

Establishment and Allocation of Research Chairs

1. Establishment and allocation of Research Chairs are the prerogative of the University and are intended to support and promote the University's strategic research goals and for reinforcing recruitment and training of graduate and highly qualified personnel.
2. A new Research Chair will be established with the authorization of Senate and provision of the Board of Governors when funding for the Research Chair is made available from external or internal sources, such as when the University receives a new CRC from the Government of Canada or an industry partner provides funding for the creation of a titled, Sponsored, Endowed, or Faculty Research Chair.
3. When an existing Research Chair is available, the Vice President (Research), the Provost and Vice President (Academic), and the Associate Vice President (Academic and Research), and the relevant Dean(s) will determine the general research area of the new Chair. Depending on the source of funds and conditions of sponsorship, Faculties and Academic Units will be invited to submit letters of intent (LOIs) demonstrating the strategic impact of allocating a Research Chair in a given area.
4. For allocation of a new Research Chair specifically designated by an external sponsor, targeting a specific research expertise, discipline, profile or candidate for a Research Chair, the establishment of the Research Chair shall be authorized by Senate and the allocation process will include consultation with the relevant Deans and Academic Unit head(s) and will follow Collective Agreement provisions for designation of a Research Chair to a currently employed faculty member.
5. An externally funded Research Chair is not permanently allocated to a specific research area or to Faculty, Academic Unit, or Research Centre/Institute at the University unless such condition has been clearly stipulated by the external sponsor at the time of establishment of the Research Chair, and that stipulation has been agreed to by the University.

6. If an existing externally funded Research Chair becomes vacant due to resignation, retirement, nonrenewal, or any other reason, the Research Chair position reverts to the University pool and the internal allocation process described in the Processes will be followed. Similarly, an externally funded Research Chair position shall revert to the University pool should no candidate accept a given nomination.

Nomination and Appointment of Research Chairs

7. The University will use its allocation of CRCs to recruit new researchers and will endeavour to create and/or access opportunities for other Research Chairs to recognize researchers who currently hold faculty appointments at the University.
8. Nomination of an external candidate to a Research Chair will involve the recruitment of the candidate to the University with the nomination to the Research Chair to follow at the appropriate time. In the recruitment process, all interested candidates will be notified that the position is related to a Research Chair and all conditions related to the Research Chair designation will be clearly outlined.
9. The procedure for the recruitment and appointment of faculty members is defined and governed by the Collective Agreement and Human Resources policies and processes.
10. The authorization to fill an allocated externally funded Research Chair may be revoked and the Research Chair reallocated if:
 - the search process is not completed because of delays outlined in the Processes section of this document
 - the candidacy is not approved by the external sponsor

To reallocate an externally funded Research Chair, the internal allocation process will be followed.

Formal Designation of Research Chairs

11. To obtain an externally funded Research Chair designation (e.g., CRC or IRC), the selected candidate must comply with the respective program requirements and agency guidelines. The agency grants the approval and the formal designation.
12. In the case of a Research Chair allocated to a research area that crosses Departments or Faculties, the individual must receive a primary appointment in one academic unit.
13. Other Research Chair designations may be granted at the discretion of the University, based on the priorities or requests of sponsors, whether internal or external.

Terms, Conditions, and Support of Research Chairs

14. A Research Chair will normally hold a full-time tenured or tenure track appointment at the University while the Research Chair designation is in effect.
15. Externally sponsored Research Chairs are subject to the terms and conditions of their awards as defined by the external sponsor. In the case of CRCs, the terms and conditions of institutional support are outlined in the Processes section of this document.
16. Internally sponsored Research Chairs are subject to the terms and conditions of their awards as defined by the internal (usually a Faculty in collaboration with the Provost's Office and with support from the Research Office) sponsor.
17. Normally, the University will support a request to extend the term of Research Chairs for Chairholders who take a leave (other than a sabbatical) from the University.

18. Determination of budgets for Research Chairs is negotiated between the respective Dean and Chairholder per research funding and supports, and subject to funding agency guidelines.

Discontinuation and Termination of Research Chairs

19. Research Chairs may be discontinued by agreement between the University and the Sponsor, whether internal or external. In such cases, the Chairholder will present a plan to the Faculty Dean, Vice President (Research) and Provost and Vice President (Academic) for the phasing out of the position with special consideration being given to the implications for students and the highly qualified personnel involved in the Research Chair's activities.

20. Designation of the honorary title *Research Chair* may be terminated when:

- The status of the faculty appointment is changed to a non-eligible status as defined by the type of Research Chair (i.e., if the eligibility criteria outlined by the University and Sponsor are not met due to a change in a Chairholder's employment status – generally, a Chairholder holds a full-time, tenured or tenure-track faculty appointment at the University)
- The outcome of the performance evaluation is unsuccessful, or the Chairholder is terminated in accordance with the provisions of the Collective Agreement
- The Chairholder is non-compliant with the policies and rules of the external sponsor or the University
- The funding for the Research Chair is fully expended or no longer available

The procedure for the termination of a Research Chair designation is outlined in the Processes.

Roles and Responsibilities

Senate

The University Senate has purview under the University of Regina Act to authorize establishment of new Research Chairs. Proposals to establish new Research Chairs are presented to Senate by the Provost and Vice President (Academic) and Vice President (Research).

Vice President (Research)

The Vice President (Research) is responsible for identifying opportunities and making recommendations for approval of establishment and allocation, nomination, designation, evaluation and renewal, and discontinuation of Research Chairs in consultation with the Provost and Vice President (Academic) to the President and Vice Chancellor and Board of Governors.

Provost and Vice President (Academic)

The Provost and Vice President (Academic) works collaboratively with the Vice President (Research) and the Associate Vice President (Academic and Research) to identify the general disciplinary focus of new Research Chairs and is responsible for outlining required academic credentials and accomplishments required for candidates to be considered.

Research Office

The Research Office provides support and advice based on best practices, legislation, and contractual agreements. The Research Office supports the Vice President (Research) and provides guidance on matters related to Research Chairs and will also support the work of the CCR for those processes and procedures as designated.

Donor Relations

Donor Relations provides support and identifies external opportunities for the creation and allocation of Research Chairs. Staff work collaboratively with the Vice President (Research) and the Research Office to build relationships with potential external sponsors and in the development of sponsorship agreements.

Council Committee on Research (CCR)

The CCR is responsible for making recommendations to the Vice President (Research) on the establishment and allocation, nomination, evaluation, and discontinuation or termination of Research Chairs within the procedures as outlined in this policy.

Faculty Research Committees or equivalent

Members of Faculty Research Committees are responsible for identifying and preparing letters of intent (LOIs) and nominations for strategic allocation of Research Chairs at the University. Faculty committees will similarly be involved with the evaluation of Research Chair performance, renewal applications, and termination of designation.

Research Chairs

Research Chairs are responsible for understanding and complying with this policy, complying with any specific conditions under which the Chair has been established, and taking responsibility for their research, meeting performance criteria, and submitting all reports required for review, renewal, and completion of terms.

Processes

(1) Externally Funded Research Chairs

Internal Allocation, Nomination and Formal Designation of Research Chairs

The procedure for internal allocation of new, vacant, or vacated Research Chairs to an academic/research unit and the designation of a candidate will follow the processes outlined herein. New Research Chairs shall be established under the authority of Senate and with provision of the Board of Governors.

Call for letters of intent (LOIs):

When an externally funded Research Chair is available, the Office of the Vice President (Research) will notify the Faculties as to the type, level, and any special conditions related to the Research Chair. Deans or their designate (usually the Associate Dean, Research) will coordinate submission of LOIs from their academic/research units. LOIs are expected to identify a strategic area for establishing a Research Chair and the profile of a potential Chairholder by addressing:

- a) Rationale for the Research Chair allocation
- research strengths in the proposed field
 - expected ability to leverage additional resources
 - contribution to the creation and mobilization of knowledge through training of graduate students and highly qualified personnel, outreach activities and interdisciplinary collaboration, and potential of attracting a high-caliber candidate
- b) Description of the research environment
- existing critical mass of research or, if an emerging area, the potential for building critical mass
 - research environment within the academic/research unit
- c) Strategic Research Plan
- expected impact on the research profile of the academic/research unit and the University
 - demonstration of fit with the University's Strategic Research Plan, including recognition of or alignment with signature research clusters of the University
 - positioning of the University with respect to the Research Chair in the Saskatchewan/Canada context

Candidates for CRC nominations are not expected to be identified and presented at the LOI stage since CRCs at the University of Regina are intended to target only external recruits. The recruitment process of new faculty members must be conducted in accordance with the Collective Agreement and HR policies and processes.

All Research Chair LOIs should address equity with the four designated groups: women, persons with a disability, Aboriginal Peoples, and visible minorities (required per CRC Secretariat).

Research Chair Nomination

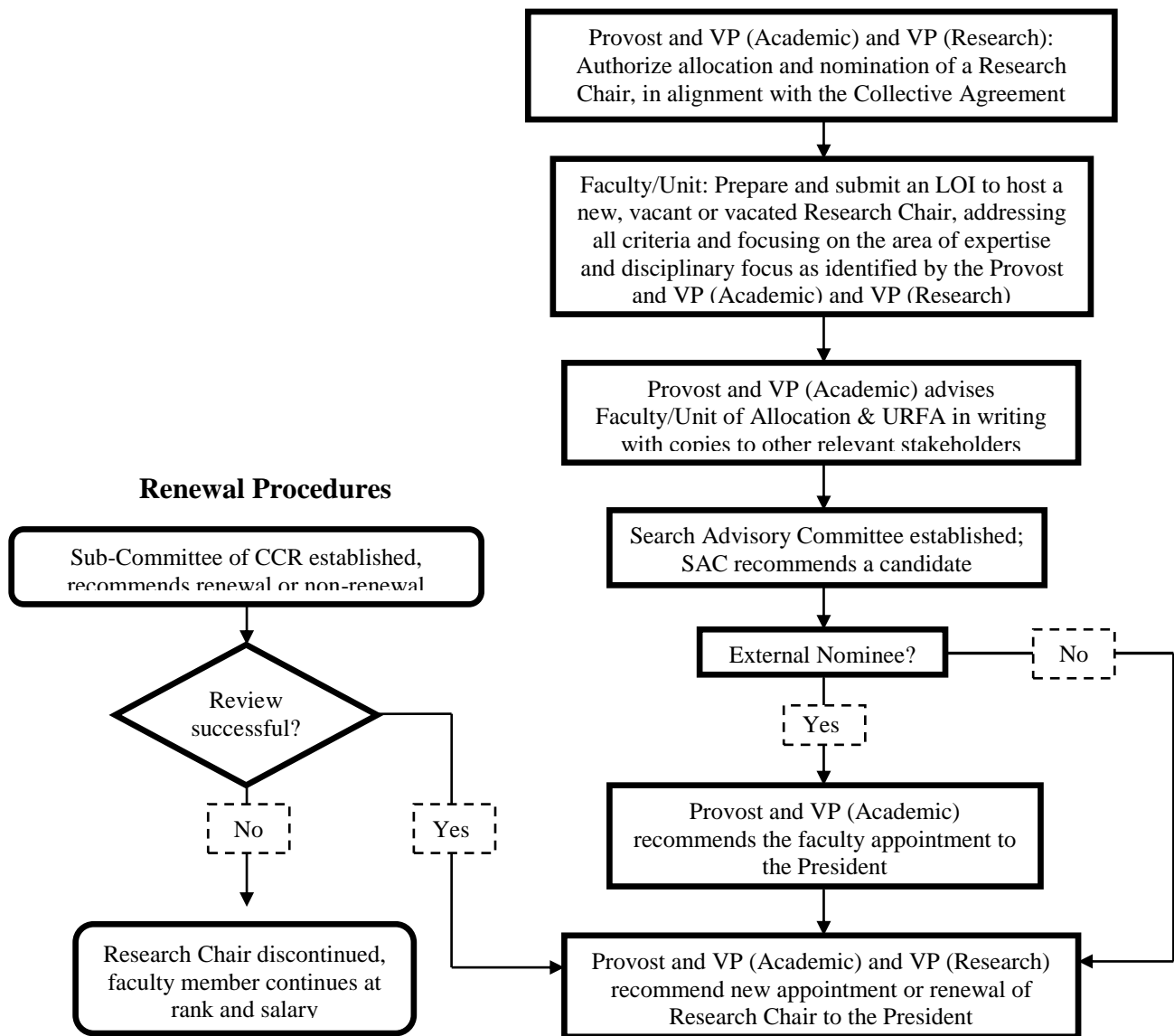
When a Research Chair is allocated to an academic/research unit, a candidate will be identified and nominated to the Research Chair in accordance with the Collective Agreement and HR policies and processes. The process for nomination depends upon whether the candidate is a new recruit or has a faculty appointment at the University, the type of chair and how a nomination is evaluated.

Research Chair Designation

The formal designation of the Research Chair is conditional upon the approval of the nomination and the relevant external designation processes.

External designation (i.e., CRC and IRC) is completed following the Faculty search process for an external candidate. The recruitment and appointment of faculty members are defined and governed by the Collective Agreement and Human Resources policies and processes.

The terms and conditions of the Research Chair are governed by the external sponsor and the University.



Special Conditions for Endowed or Sponsored Research Chairs

The procedure for internal designation of a candidate for new, vacant, or vacated Endowed or Sponsored Research Chairs for which specific objectives and expertise have been identified by the Sponsor will follow the processes outlined herein.

Sponsor-Driven Conditions

When a sponsor indicates interest in the creation of an Endowed or Sponsored Research Chair, Donor Relations, the Provost and Vice President (Academic) and Vice President (Research) will work collaboratively to negotiate the terms and prepare the agreements for creation of the Research Chair in alignment with the Collective Agreement.

- a) For Sponsor-Identified Candidates: a new, vacated or vacant Research Chair is specifically designated by an external Sponsor, targeting a specific research expertise and ideal candidate from the existing faculty complement for delivering that specific research expertise.
- b) For Undesignated Candidate: a new, vacated or vacant Research Chair is specifically designated by an external Sponsor, targeting a specific research expertise, discipline, or candidate profile for delivering that specific research expertise.

Establishment of a Research Chair

Establishment of a new Research Chair and allocation of a vacant or vacated Research Chair must be approved by the Vice President (Research) and Provost and Vice President (Academic), as well as the President and Vice-Chancellor and Board of Governors.

Research Chair Designation

The agreements for terms and conditions of the Research Chair will be drafted collaboratively by Donor Relations and the Research Office.

All Research Chair appointments must include a statement about how the Chair aligns with supporting a representative, addressing equity with the four designated groups: women, persons with a disability, Aboriginal Peoples, and visible minorities.

The formal designation of the Research Chair is conditional upon the approval of the nomination and the relevant external designation processes. Designation of a candidate will take place in accordance with the Collective Agreement and HR policies and processes.

Donor Relations Responsibility

Contact made with Sponsor, who confers with Donor Relations to identify terms, conditions, discipline or research area, and other relevant expectations for the Chair or Professorship

Sponsor confirms terms of establishment

Provost and Vice President (Academic) and Vice President (Research) Authority

Provost and VP (Academic) and VP (Research) authorize establishment of a Research Chair, specify the name and area of the Chair, source of funding, expected category of the position, and any special conditions associated with the appointment, and in alignment with the Collective Agreement

For Undesignated Faculty or Candidate

For Collaboratively Identified Internal Expert / Sponsor-Identified Candidate

Provost and VP (Academic) and VP (Research) invite submission of LOIs from Faculties and Academic Units

Provost and VP (Academic) advises URFA in writing with copies to other relevant

Search Advisory Committee established; SAC recommends a candidate

External Nominee

No

Yes

Provost & VP-A recommends the faculty appointment to the President

Provost and VP (Academic) and VP (Research) recommend or renew the Research Chair appointment to the President

Renewal Procedures

Sub-Committee of CCR established, recommends renewal or non-renewal

Review successful?

No

Yes

Research Chair discontinued, faculty member continues at rank and salary

(2) Internally Funded Research Chairs

The procedure for internal designation and funding of a candidate for new, vacant, or vacated Faculty Research Chairs for which specific objectives and expertise have been identified by the Faculty Dean, Provost and Vice President (Academic), and Vice President (Research) will follow the processes outlined herein. New Research Chairs shall be established under the authority of Senate and with provision of the Board of Governors.

Faculty-Established Conditions and Expectations

When a Faculty indicates interest in the creation of a Faculty Research Chair, the Provost and Vice President (Academic) and Vice President (Research) will work collaboratively to determine the terms and conditions for said Research Chair and prepare the agreements for creation of the Research Chair in alignment with the Collective Agreement.

A new, vacated or vacant Faculty Research Chair will be specifically designated targeting a specific research expertise that is of strategic importance to the University and an ideal candidate from the existing faculty complement for delivering that specific research expertise.

Establishment of a Faculty Research Chair

Establishment of a new Faculty Research Chair and allocation of a vacant or vacated Research Chair must be approved by the Vice President (Research) and Provost and Vice President (Academic), as well as the President and Vice-Chancellor and Board of Governors.

Research Chair Designation

The agreements for terms and conditions of the Research Chair will be drafted collaboratively by the Faculty, in consultation with the Provost and Vice President (Academic), and the Research Office.

All Research Chair appointments must include a statement about how the Chair aligns with supporting a representative, addressing equity with the four designated groups: women, persons with a disability, Aboriginal Peoples, and visible minorities.

Designation of a candidate will take place in accordance with the Collective Agreement and HR policies and processes.

(3) All Research Chairs

Reporting, Evaluation and Renewal of Research Chairs

- Annual reporting is required of all Research Chairs.
 - The Research Office will coordinate the format, submission deadlines, and requirements for inclusion in annual reports.
 - Additional requirements for annual reporting of externally sponsored Research Chairs are governed by the rules of the external sponsor.

- Mid-term review is required of all Research Chairs and will be coordinated by the Research Office in collaboration with Faculty Research committees.
- Research Chairs that are renewable after a completed term must undergo an internal performance evaluation.
 - Each Faculty will establish a committee at least 12 months prior to the external renewal application deadline to review the renewal package assembled by the Research Chair.
 - The Faculty committee recommendation will be submitted to the Vice President (Research) and Council Committee on Research at least 6 months in advance of the external renewal application deadline.
 - The renewal package will include annual reports, outcomes of the mid-term evaluation, and any other additional and applicable evidence to support renewal.
- Following a positive decision by the Vice President (Research) and Council Committee on Research:
 - An externally sponsored Research Chair may proceed with the development of the renewal dossier. A successful renewal nomination by the external sponsor will result in the continuation of the Research Chair designation.
 - An Endowed or Sponsored Research Chair will be considered renewed and will receive a letter of appointment stating the terms and conditions of the upcoming term.
- Following a negative decision by the Office of the Vice President (Research) and Council Committee on Research, the Research Chair returns to the University pool, per policy.

Discontinuation and Termination of Research Chairs

The following describes the procedure for the discontinuation of Research Chairs as well as the termination of an honorary Research Chair designation.

Discontinuation of a Research Chair:

A Research Chair may be discontinued by mutual agreement between the University and a Sponsor. The discontinuation may be due to the withdrawal or lack of sufficient funds by the Sponsor or other reasons.

The University may consider limited support during the phase-out period in order to ensure that existing student commitments are met. As a result, the Chairholder must present a plan for the phasing-out of the position, with special consideration being given to the implications for the students involved in the Research Chair's activities. The Chairholder retains their pre-existing academic appointment at their existing rank and salary level, excluding the stipend from the Research Chair.

CRCs Eliminated by the Chairs Secretariat

If an institution's performance decreases relative to other institution to the extent that the institution's Chair allocation is reduced through the re-allocation process, the Chairs Secretariat will reclaim the lost Chair allocations. The institution can choose, in consultation with the Secretariat, to give back unoccupied Chairs or to use a deactivation funding mechanism using a sliding scale of decreasing support (100–50–0 per cent) on active Chairs.

CRC allocations eliminated prior to completion of a full term due to reallocation by the Chairs Secretariat require that the University of Regina terminate an existing CRC-holder. In that event, the Chairholder whose CRC is terminated will be granted an extension of all teaching load provisions and Faculty research support, at the discretion of the relevant Dean or Director. The institutional stipend and research portion will be terminated. Chairholders will retain their titles until the end of their existing terms.

<http://www.chairs-chaire.gc.ca/program-programme/allocation-attribution-eng.aspx>

Determination of the CRC whose term shall be terminated in the event of elimination by the Chairs Secretariat will be completed at the discretion of the Vice President (Research) who will consider time remaining in the existing terms of all CRCs, research performance and funding status of all CRCs, and potential for converting CRCs into other existing or emerging Chairs positions.

Termination of a Chairholder's Designation:

A Chairholder may, at any time, voluntarily relinquish a Research Chair designation. In this case, a written notice shall be sent by the Chairholder to the Faculty Dean who shall ensure that the Office of the Vice President (Research) and the Research Office are informed.

A Research Chair's honorary designation may be terminated by the University if any of the following situations apply:

- a) The status of the faculty appointment is changed to a non-eligible status as defined by the chair type. Eligibility criteria for Chairholders are governed by the University and the Sponsor. In general, a Chairholder holds a full-time, tenured or tenure-track faculty appointment at the University. If the faculty appointment changes (i.e. from full-time to part-time or adjunct), the Chairholder might not be eligible to continue holding the Research Chair designation and the designation will be terminated as of the date of the status change. The same applies if a Chairholder leaves the University.
- b) The outcome of the Research Chair's performance evaluation is unsuccessful or if the Research Chair is terminated in accordance with the Collective Agreement and/or relevant HR policies and processes. Based upon the outcome of the performance evaluation for renewal, the CCR, in consultation with the Faculty committee, may decide not to renew the Research Chair. In cases of non-renewal, the Chairholder will relinquish the Research Chair at the end of the term. The Chairholder retains a full-time academic appointment at the existing rank and salary level, excluding the stipend from the Research Chair. In addition, if the Chairholder is terminated from the University in accordance with the Collective Agreement, the term as Research Chair shall terminate simultaneously.
- c) The Chairholder is non-compliant with the regulations set by the University or by the Sponsor. There are two aspects of compliance that impact a Research Chair:
 - (i) compliance related to academic performance and/or
 - (ii) compliance with the regulations outlined by the University and the Sponsor.

Any compliance issues raised during annual reporting or mid-term review will be monitored in the following annual report. Two consecutive unsatisfactory evaluations may be grounds for ending the Research Chair designation. If the Faculty considers terminating the designation of a Research Chair during a term, a written justification shall be submitted to the Vice President (Research). In the spirit of conciliation, the Vice President (Research) may convene all parties involved and seek advice from the CCR to propose a plan for either the realignment of the Research Chair or the phasing out of the Research Chair activities.

Non-compliance with the regulations outlined by the University or the Sponsor or the Collective Agreement may result in the freezing of funds for the Research Chair. Fraudulent use of funds or other forms of academic, scholarly, or research misconduct are sufficient grounds for the University to terminate the Research Chair designation without notice. In addition, the University will promptly report any fraudulent use of funds to the appropriate authorities and implement internal processes for academic, scholarly, and research integrity.

The grievance provisions of the Collective Agreement shall apply to the termination of a Research Chair's designation by the University.

When a Research Chair designation is terminated, the University will contact the Sponsor to inform them of the termination. If the Research Chair is still available to the University, it will become vacant and the internal procedure for a new nomination will be initiated in accordance with the allocation process.

The termination of a Canada Research Chair is governed by the CRC program Secretariat's administrative guidelines, acknowledging that University regulations supersede all other factors concerning the faculty appointment of Research Chairs.

Related Information

- [University of Regina 2015-2020 Strategic Plan](#)
- [GOV-022-025 – Research/Scholarly Misconduct](#)
- [RCH-020-005 – Care and Use of Animals](#)
- [RCH-020-010 – Ethics – Research with Humans](#)
- [GOV-022-010 – Conflict of Interest and Conflict of Commitment](#)
- [Canadian Council on Animal Care](#)
- [Tri-Agency Framework: Responsible Conduct of Research](#)

**REPORT TO
EXECUTIVE OF COUNCIL MEETING
October 28, 2015
FROM THE COUNCIL COMMITTEE
ON UNDERGRADUATE ADMISSIONS AND STUDIES**

1. ITEMS FOR APPROVAL

The Council Committee on Undergraduate Admissions and Studies met on October 7, 2015, and has approved the following curriculum, program and policy changes, and hereby recommends them for approval.

1.1 Report from the Faculty of Science

MOTION 1: Bachelor of Science

To add Math 103 as a calculus option to Section 16.9.1.1 – Structure of the Program, of the Undergraduate Calendar and Course Catalog: Effective 201630

16.9 ACADEMIC PROGRAMS

16.9.1 BACHELOR OF SCIENCE (BSC)

16.9.1.1 Structure of the Program

To satisfy the requirements for a Bachelor of Science degree a student must complete a minimum of 120 credit hours (40 courses) distributed as follows:

- A minimum of 66 credit hours must be taken in the Faculty of Science. Of these:
- A minimum of 42 credit hours in a major discipline;
 - For BSc and BSc Honours students who are majoring in Geography, Economics and Psychology, courses within the major requirements are considered to be within the Faculty of Science. Additional courses in these disciplines will continue to be treated as Arts electives (see below).
- A minimum of 18 credit hours in disciplines other than the major;
 - The following courses must be included:
 - 6 credit hours of natural science courses (must have a lab component). These courses are taught in the departments of Biology, Chemistry and Biochemistry, Geology and Physics.
 - MATH 103, or MATH 110;
 - CS 110.
- A minimum of 18 credit hours, including ENGL 100 and 110, must be taken in the Faculties of Arts and/or Fine Arts.
- Up to 36 credit hours of electives (as required to total 120 credit hours), which may include a maximum of 18 credit hours in courses from faculties other than Science, Arts, or Fine Arts.

(end of motion 1)

Rationale: This change is required to allow any BSc, BSc Hons, and Certificate programs to be updated with the new Math options.

MOTION 2: BSc Combined Major in Biology and Statistics (Sections 16.11.2.9 and 16.17.2.7)

To close admissions to the BSc Combined Major in Biology and Statistics program. Effective 201610.

(end of motion 2)

Rationale: Since 1990, only two students have graduated from this program. Currently there are two students enrolled in this program.

MOTION 3: BSc and BSc Hons program in Biology, Cellular & Molecular Biology Area of Concentration

To add the newly created BIOL 310 – Microbiology Diversity and Cell Function to the BSc and BSc Hons program in Biology, Cellular & Molecular Biology Area of Concentration.

16.11.2.3 BSc in Biology, Cellular & Molecular Biology Area of Concentration

Refer to §16.6 and §16.9.1 for additional important information.

Credit hours	BSc with Biology major, Cellular & Molecular Biology area of concentration	Student's record of courses completed
3.0	BIOC 220	
3.0	BIOL 100	
3.0	BIOL 101	
3.0	BIOL 205	
3.0	BIOL 220	
3.0	BIOL 265	
3.0	BIOL 266	
3.0	BIOL 275 or BIOL 276	
3.0	BIOL 288	
3.0	BIOL 305	
0.0	BIOL 488 (semester 1)	
0.0	BIOL 488 (semester 2)	
3.0	FIVE courses from:	
3.0	BIOL 302, 303, 310,	
3.0	315, 366, 390, 395,	
3.0	401, 402, 405, 406,	
3.0	410, 455, 465, up to	

	two of BIOC 221, 3xx or 4xx	
3.0	CHEM 104	
3.0	CHEM 105	
3.0	CHEM 140	
3.0	CS 110	
3.0	MATH 110	
3.0	MATH 111	
3.0	PHYS 109 and 119, or PHYS 111 and 112	
3.0	STAT 100	
3.0	STAT 200	
75.0	Subtotal: Major Requirements	65% Major GPA required
3.0	ENGL 100	
3.0	ENGL 110	
3.0	Arts or Fine Arts elective	
3.0	Arts or Fine Arts elective	
3.0	Arts or Fine Arts elective	
3.0	Arts or Fine Arts elective	
3.0	Science, Arts, or Fine Arts elective	
3.0	Science, Arts, or Fine Arts elective	
3.0	Science, Arts, or Fine Arts elective	
3.0	Science, Arts, or Fine Arts elective	
3.0	Open elective	
3.0	Open elective	
3.0	Open elective	
3.0	Open elective	
3.0	Open elective	
120.0	Total	65% Program GPA required

16.11.2.4 BSc Honours in Biology, Cellular & Molecular Biology Area of Concentration

Refer to §16.6 and §16.9.2 for additional important information.

Credit hours	BSc Honours with Biology major, Cellular & Molecular Biology area of concentration required courses	Student's record of courses completed
3.0	BIOC 220	
3.0	BIOL 100	
3.0	BIOL 101	
3.0	BIOL 205	
3.0	BIOL 220	
3.0	BIOL 265	
3.0	BIOL 266	
3.0	BIOL 275 or BIOL 276	
3.0	BIOL 288	
3.0	BIOL 305	
0.0	BIOL 488 (semester 1)	
0.0	BIOL 488 (semester 2)	
3.0	BIOL 498	
3.0	BIOL 499	
3.0	SIX courses from	
3.0	BIOL 302, 303, 310,	
3.0	366, 390, 395, 401,	
3.0	402, 405, 407, 410,	
3.0	490BG, up to two of	
3.0	BIOC 221, 3xx or 4xx	
3.0	CHEM 104	
3.0	CHEM 105	
3.0	CHEM 140	
3.0	CS 110	
3.0	MATH 110	
3.0	MATH 111	
3.0	PHYS 109 and 119,	
3.0	or PHYS 111 and 112	
3.0	STAT 100	
3.0	STAT 200	
84.0	Subtotal: Major Requirements	75% Major GPA required
3.0	ENGL 100	
3.0	ENGL 110	
3.0	Arts or Fine Arts elective	

3.0	Arts or Fine Arts elective	
3.0	Arts or Fine Arts elective	
3.0	Arts or Fine Arts elective	
3.0	Open elective	
3.0	Open elective	
3.0	Open elective	
3.0	Open elective	
3.0	Open elective	
3.0	Open elective	
120.0	Total	70% Program GPA required

(end of motion 3)

Rationale: This new course will strengthen the program and the utilization of the Department of Biology's expertise and resources.

Motions 4 to 7: Omnibus motions regarding BSc and Joint BSc and BSc Hons and Joint BSc Hons in Biology programs

MOTION 4: To remove BIOL 220 (Introductory Microbiology) and replace it with one Biology course at the 2XX, 3XX, or 4XX level. Effective Date: 201630

MOTION 5: To add BIOL 275 as a required course, add one course from BIOL 2XX, BIOL 3XX, 4XX, or BIOC 220, and remove both instances of BIOL 275, 276 or BIOC 220 Effective Date: 201630

MOTION 6: To add BIOL 402 as a required course and remove either one BIOL 3XX or 4XX or one course from the "Courses From" list Effective Date: 201630

MOTION 7: To replace BIOL 265 with the newly created BIOL 378 course. Effective Date: 201630

16.11.2.1 BSc in Biology

Refer to §16.6 and §16.9.1 for additional important information.

Credit hours	BSc with Biology major, required courses	Student's record of courses completed
3.0	BIOL 100	
3.0	BIOL 101	
3.0	BIOL 205	
3.0	BIOL 220	
3.0	BIOL 266	
<u>3.0</u>	<u>BIOL 275</u>	
3.0	BIOL 275, 276 or BIOC 220	
3.0	BIOL 275, 276 or BIOC 220	
3.0	BIOL 288	
3.0	<u>BIOL 2XX, 3XX, 4XX, or BIOC 220</u>	
3.0	BIOL 265-378	
3.0	<u>BIOL 2XX, 3XX, or 4XX</u>	
3.0	<u>BIOL 402</u>	
0.0	BIOL 488 (semester 1)	
0.0	BIOL 488 (semester 2)	
3.0	BIOL 3xx, 4xx or BIOC 221 or above	
3.0	BIOL 3xx, 4xx or BIOC 221 or above	
3.0	BIOL 3xx, 4xx or STAT 342	
3.0	BIOL 3xx or 4xx	
3.0	BIOL 3xx or 4xx	
3.0	BIOL 3xx or 4xx	
3.0	CHEM 104	
Credit	CHEM 105	
3.0	CHEM 140	
3.0	CS 110	
3.0	MATH 110	
3.0	MATH 111	
3.0	PHYS 109 and 119,	
3.0	or PHYS 111 and 112	
3.0	STAT100	
3.0	STAT 200	

75.0	Subtotal: Major Requirements	65% Major GPA required
-------------	-------------------------------------	-------------------------------

16.11.2.2 BSc Honours in Biology

Refer to §16.6 and §16.9.2 for additional important information.

Credit hours	BSc with Biology major, required courses	Student's record of courses completed
3.0	BIOL 100	
3.0	BIOL 101	
3.0	BIOL 205	
3.0	BIOL 220	
3.0	BIOL 266	
<u>3.0</u>	<u>BIOL 275</u>	
3.0	BIOL 275, 276 or BIOC 220	
3.0	BIOL 275, 276 or BIOC 220	
3.0	BIOL 288	
3.0	<u>BIOL 2XX, 3XX, 4XX, or BIOC 220</u>	
3.0	<u>BIOL 265-378</u>	
3.0	<u>BIOL 2XX, 3XX, or 4XX</u>	
<u>3.0</u>	<u>BIOL 402</u>	
0.0	BIOL 488 (semester 1)	
0.0	BIOL 488 (semester 2)	
3.0	BIOL 498	
3.0	BIOL 499	
3.0	BIOL 3xx, 4xx or BIOC 221 or above	
3.0	BIOL 3xx, 4xx or BIOC 221 or above	
3.0	BIOL 3xx, 4xx or STAT 342	
3.0	BIOL 3xx or 4xx	
3.0	BIOL 3xx or 4xx	
3.0	BIOL 3xx or 4xx	
3.0	BIOL 3xx or 4xx	
3.0	CHEM 104	
3.0	CHEM 105	
3.0	CHEM 140	
3.0	CS 110	
3.0	MATH 110	
3.0	MATH 111	

3.0	PHYS 109 and 119,	
3.0	or PHYS 111 and 112	
3.0	STAT100	
3.0	STAT 200	
84.0	Subtotal: Major Requirements	75% Major GPA required
3.0	ENGL 100	
3.0	ENGL 110	
3.0	Arts or Fine Arts elective	
3.0	Arts or Fine Arts elective	
3.0	Arts or Fine Arts elective	
3.0	Arts or Fine Arts elective	
3.0	Open elective	

Credit hours	BSc with Biology major, required courses	Student's record of courses completed
3.0	Open elective	
3.0	Open elective	
3.0	Open elective	
3.0	Open elective	
3.0	Open elective	
120.0	Total	70% Program GPA required

16.11.2.3 BSc in Biology, Cellular & Molecular Biology Area of Concentration

Refer to §16.6 and §16.9.1 for additional important information.

Credit hours	BSc with Biology major, Cellular & Molecular Biology area of concentration	Student's record of courses completed
3.0	BIOC 220	
3.0	BIOL 100	
3.0	BIOL 101	
3.0	BIOL 205	
3.0	BIOL 220	
3.0	BIOL 265-378	
3.0	BIOL 266	

3.0	BIOL 275 or BIOL 276	
3.0	BIOL 288	
<u>3.0</u>	<u>BIOL 2XX, 3XX, or 4XX</u>	
3.0	BIOL 305	
<u>3.0</u>	<u>BIOL 402</u>	
0.0	BIOL 488 (semester 1)	
0.0	BIOL 488 (semester 2)	
3.0	FIVE-FOUR courses	
3.0	from: BIOL 302, 303,	
3.0	315, 366, 390, 395,	
3.0	401, 402 , 405, 406,	
3.0	410, 455, 465, up to two of BIOC 221, 3xx or 4xx	
3.0	CHEM 104	
3.0	CHEM 105	
3.0	CHEM 140	
3.0	CS 110	

Credit hours	BSc with Biology major, Cellular & Molecular Biology area of concentration	Student's record of courses completed
3.0	MATH 110	
3.0	MATH 111	
3.0	PHYS 109 and 119,	
3.0	or PHYS 111 and 112	
3.0	STAT 100	
3.0	STAT 200	
75.0	Subtotal: Major Requirements	65% Major GPA required
3.0	ENGL 100	
3.0	ENGL 110	
3.0	Arts or Fine Arts elective	
3.0	Arts or Fine Arts elective	
3.0	Arts or Fine Arts elective	

3.0	Arts or Fine Arts elective	
3.0	Science, Arts, or Fine Arts elective	
3.0	Science, Arts, or Fine Arts elective	
3.0	Science, Arts, or Fine Arts elective	
3.0	Science, Arts, or Fine Arts elective	
3.0	Open elective	
3.0	Open elective	
3.0	Open elective	
3.0	Open elective	
3.0	Open elective	
120.0	Total	65% Program GPA required

6.11.2.4 BSc Honours in Biology, Cellular & Molecular Biology Area of Concentration

Refer to §16.6 and §16.9.2 for additional important information.

Credit hours	BSc Honours with Biology major, Cellular & Molecular Biology area of concentration required courses	Student's record of courses completed
3.0	BIOC 220	
3.0	BIOL 100	
3.0	BIOL 101	
3.0	BIOL 205	
3.0	BIOL 220	
3.0	BIOL 265-378	
3.0	BIOL 266	
3.0	BIOL 275 or BIOL 276	
3.0	BIOL 288	
<u>3.0</u>	<u>BIOL 2XX, 3XX, or 4XX</u>	
3.0	BIOL 305	
<u>3.0</u>	<u>BIOL 402</u>	
0.0	BIOL 488 (semester 1)	
0.0	BIOL 488 (semester 2)	
3.0	BIOL 498	
3.0	BIOL 499	
3.0	SIX-FIVE courses	

3.0	from BIOL 302, 303,	
3.0	366, 390, 395, 401,	
3.0	402, 405, 407, 410,	
3.0	490BG, up to two of	
3.0	BIOC 221, 3xx or 4xx	
3.0	CHEM 104	
3.0	CHEM 105	
3.0	CHEM 140	
3.0	CS 110	
3.0	MATH 110	
3.0	MATH 111	
3.0	PHYS 109 and 119,	
3.0	or PHYS 111 and 112	
3.0	STAT 100	
3.0	STAT 200	
84.0	Subtotal: Major Requirements	75% Major GPA required
3.0	ENGL 100	
3.0	ENGL 110	
3.0	Arts or Fine Arts elective	
3.0	Arts or Fine Arts elective	
3.0	Arts or Fine Arts elective	
3.0	Arts or Fine Arts elective	
3.0	Open elective	
3.0	Open elective	
3.0	Open elective	
3.0	Open elective	
3.0	Open elective	
3.0	Open elective	
120.0	Total	70% Program GPA required

16.11.2.5 BSc in Biology, Ecology & Environmental Biology Area of Concentration
Refer to §16.6 and §16.9.1 for additional important information.

Credit hours	BSc with Biology major, Ecology & Environmental Biology area of concentration	Student's record of courses completed
3.0	BIOL 100	
3.0	BIOL 101	

3.0	BIOL 205	
3.0	BIOL 220	
3.0	BIOL 265-378	
3.0	BIOL 266	
3.0	BIOL 275	
3.0	BIOL 276	
3.0	BIOL 288	
<u>3.0</u>	<u>BIOL 2XX, 3XX, or 4XX</u>	
<u>3.0</u>	<u>BIOL 402</u>	
0.0	BIOL 488 (semester 1)	
0.0	BIOL 488 (semester 2)	
3.0	SIX-FIVE courses	

Credit hours	BSc with Biology major, Ecology & Environmental Biology area of concentration	Student's record of courses completed
3.0	from: BIOL 302, 316, 335, 341 (or STAT 342), 365, 366, 367, 375, 376, 380, 385, 401, 402 , 425, 435, 456, 457, 463, 476, 485	
3.0		
3.0		
3.0		
3.0		
3.0	CHEM 104	
3.0	CHEM 105	
3.0	CHEM 140	
3.0	CS 110	
3.0	MATH 110	
3.0	MATH 111	
3.0	PHYS 109 and 119, or PHYS 111 and	
3.0		
3.0	STAT 100	
3.0	STAT 200	
75.0	Subtotal: Major	65% Major GPA
3.0	ENGL 100	
3.0	ENGL 110	
3.0	Arts or Fine Arts elective	

3.0	Arts or Fine Arts elective	
3.0	Arts or Fine Arts elective	
3.0	Arts or Fine Arts elective	
3.0	Science, Arts, or Fine Arts elective	
3.0	Science, Arts, or Fine Arts elective	
3.0	Science, Arts, or Fine Arts elective	
3.0	Science, Arts, or Fine Arts elective	
3.0	Open elective	
3.0	Open elective	
3.0	Open elective	
3.0	Open elective	
Credit hours	BSc with Biology major, Ecology & Environmental Biology area of concentration	Student's record of courses completed
3.0	Open elective	
120.0	Total	65% Program GPA required

16.11.2.6 BSc Honours in Biology, Ecology & Environmental Biology Area of Concentration

Refer to §16.6 and §16.9.2 for additional important information.

Credit hours	BSc Honours in Biology, Ecology & Environmental Biology required courses	Student's record of courses completed
3.0	BIOL 100	
3.0	BIOL 101	
3.0	BIOL 205	
3.0	BIOL 220	
3.0	BIOL 265-378	
3.0	BIOL 266	
3.0	BIOL 275	
3.0	BIOL 276	

120.0	Total	70% Program GPA required
--------------	--------------	---------------------------------

16.11.2.10 BSc in Environmental Biology (Joint Program with Saskatchewan Polytechnic & Lethbridge College)

This is a joint program with Saskatchewan Polytechnic and Lethbridge College. To complete the BSc in Environmental Biology, students must have completed the Diploma of Integrated Resource Management from Saskatchewan Polytechnic or the Diploma in Renewable Resource Management from Lethbridge College with a minimum 60% graduating average and a passing grade in Pre-Calculus 30 or equivalent. Graduation from a similar program may be used for admission to this program and will be reviewed on a case by case basis. Students meeting admission requirements will be granted 60.0 hours of block transfer credit toward this degree program.

Refer to §16.6 and §16.9.1 for additional important information.

Credit hours	Environmental Biology major (University of Regina), required courses	Student's record of courses completed
3.0	BIOL 100	
3.0	BIOL 101	
3.0	BIOL 205	
0.0	BIOL 488 (first semester)	
0.0	BIOL 488 (second semester)	
3.0	THREE TWO	
3.0	courses from:	
3.0	BIOL 316, 335, 341 (or STAT 342), 365, 367, 380, 385, 435, 456, 457, 463, 476, 485	
<u>3.0</u>	<u>BIOL 402</u>	
3.0	CHEM 104	
3.0	CHEM 140	
3.0	GEOG 121	
3.0	GEOG 226	
3.0	GEOG 325, 326 or 327	
3.0	MATH 110	
3.0	PHYS 109 or 111	
3.0	ENGL 100	
3.0	ENGL 110	
3.0	STAT 200	
3.0	Arts, or Fine Arts elective	

3.0	Science, Arts, or Fine Arts elective	
3.0	Science, Arts, or Fine Arts elective	
3.0	Science, Arts, or Fine Arts elective	
60.0	Subtotal	65% U of R GPA required
120.0	Total	

6.11.2.11 BSc Honours in Environmental Biology (Joint Program with Saskatchewan Polytechnic & Lethbridge College)

This is a joint program with Saskatchewan Polytechnic and Lethbridge College. To complete the BSc in Environmental Biology, students must have completed the Diploma of Integrated Resource Management from Saskatchewan Polytechnic, or the Diploma in Renewable Resource Management from Lethbridge College with a minimum 60% graduating average and a passing grade in Pre-Calculus 30 or equivalent. Graduation from a similar program may be used for admission to this program and will be reviewed on a case by case basis. Students meeting admission requirements will be granted 60.0 hours of block transfer credit toward this degree program.

Refer to §16.6, §16.9.2, and §16.11.2.10 for additional important information.

Credit hours	Environmental Biology major (University of Regina), required courses	Student's record of courses completed
3.0	BIOL 100	
3.0	BIOL 101	
3.0	BIOL 205	
0.0	BIOL 488 (first semester)	
0.0	BIOL 488 (second semester)	
3.0	BIOL 498	
3.0	BIOL 499	
3.0	BIOL 402	
3.0	FIVE FOUR courses	
3.0	from:	
3.0	BIOL 316, 335, 341	
3.0	(or STAT 342), 365,	
3.0	367, 380, 385, 435, 456, 457, 463, 476, 485	
3.0	CHEM 104	
3.0	CHEM 140	
3.0	GEOG 121	
3.0	GEOG 226	

3.0	GEOG 325, 326, or 327	
3.0	MATH 110	
3.0	PHYS 109 or 111	
3.0	ENGL 100	
3.0	ENGL 110	
3.0	STAT 200	
3.0	Arts, or Fine Arts elective	
3.0	Science, Arts, or Fine Arts elective	
3.0	Science, Arts, or Fine Arts elective	
3.0	Science, Arts, or Fine Arts elective	
72.0	Subtotal	70% U of R GPA required
132.0	Total	

16.11.2.12 BSc in Environmental Biology (Joint Program with Lakeland College)

This is a joint program with Lakeland College. To complete the BSc in Environmental Biology, students must have completed the Diploma in Wildlife and Fisheries Conservation, or the Diploma in Conservation and Restoration Ecology at Lakeland College with a minimum 60% graduating average and a passing grade in Pre-Calculus 30 or equivalent. Graduation from a similar program may be used for admission to this program and will be reviewed on a case by case basis. Students meeting admission requirements will be granted 60.0 hours of block transfer credit toward this degree program.

Credit hours	Environmental Biology major (University of Regina), required courses	Student's record of courses completed
3.0	BIOL 100	
3.0	BIOL 101	
3.0	BIOL 205	
3.0	BIOL 220	
3.0	ONE of: BIOL 265 or 266 -BIOL 266 or 378	
<u>3.0</u>	<u>BIOL 2XX, 3XX, 4XX</u>	
<u>3.0</u>	<u>BIOL 402</u>	
0.0	BIOL 488 (first semester)	
0.0	BIOL 488 (second semester)	

3.0	THREE-TWO	
3.0	courses from:	
3.0	BIOL 316, 335, 341 (or STAT 342), 365, 367, 380, 385, 435, 456, 457, 463, 476, 485	
3.0	GEOG 121	
3.0	GEOG 226	
3.0	GEOG 325, 326 or 327	
3.0	MATH 110	
3.0	PHYS 109 or 111	
3.0	ENGL 100	
3.0	ENGL 110	
3.0	STAT 200	
3.0	Science, Arts, or Fine Arts elective	
3.0	Science, Arts, or Fine Arts elective	
3.0	Science, Arts, or Fine Arts elective	
3.0	Science, Arts, or Fine Arts elective	
60.0	Subtotal	65% U of R GPA required
120.0	Total	

16.11.2.13 BSc Honours in Environmental Biology (Joint Program with Lakeland College)

This is a joint program with Lakeland College. To complete the BSc in Environmental Biology, students must have completed the Diploma in Wildlife and Fisheries Conservation, or the Diploma in Conservation and Restoration Ecology at Lakeland College with a minimum 60% graduating average and a passing grade in Pre-Calculus 30 or equivalent. Graduation from a similar program may be used for admission to this program and will be reviewed on a case by case basis. Students meeting admission requirements will be granted 60.0 hours of block transfer credit toward this degree program.

Refer to §16.6, §16.9.2, and §16.11.2.10 for additional important information.

Credit hours	Environmental Biology major (University of Regina), required courses	Student's record of courses completed
3.0	BIOL 100	

3.0	BIOL 101	
3.0	BIOL 205	
3.0	BIOL 220	
3.0	ONE of: BIOL 265, or 266 -BIOL 266 or 378	
<u>3.0</u>	<u>BIOL 2XX, 3XX,</u> <u>4XX</u>	
<u>3.0</u>	<u>BIOL 402</u>	

Credit hours	Environmental Biology major (University of Regina), required courses	Student's record of courses completed
0.0	BIOL 488 (first semester)	
0.0	BIOL 488 (second semester)	
3.0	BIOL 498	
3.0	BIOL 499	
3.0	FIVE FOUR courses	
3.0	from:	
3.0	BIOL 316, 335, 341	
3.0	(or STAT 342), 365,	
3.0	367, 380, 385, 435,	
3.0	456, 457, 463, 476, 485	
3.0	GEOG 121	
3.0	GEOG 226	
3.0	GEOG 325, 326, or 327	
3.0	MATH 110	
3.0	PHYS 109 or 111	
3.0	ENGL 100	
3.0	ENGL 110	
3.0	STAT 200	
3.0	Science, Arts, or Fine Arts elective	
3.0	Science, Arts, or Fine Arts elective	
3.0	Science, Arts, or Fine Arts elective	
3.0	Science, Arts, or Fine Arts elective	
72.0	Subtotal	70% U of R GPA required
132.0	Total	

(end of motions 4 to 7)

Rationale: The deletion of BIOL 220 from our program reduces the required 2nd year course numbers by one. Students will have access to microbiology concepts in BIOL 101, as well as a number of BIOL electives (BIOL 223, 302, 310, 410) if they so choose.

Our current program requires students to take two of three courses: BIOL 275, BIOL 276 or BIOC 220. Our review concluded that our students would be better served if all were required to take BIOL 275 (Ecology). As well, an analysis of programs across Canada reveal that Ecology is a required course and our programs are unique in the lack of this requirement. This change also serves to reduce our required second year courses by one.

Evolution is a cornerstone of Biology and should be a required course in all programs. The course is well subscribed and having a required course at the upper level allows us to bring our students together at the end of the program for synthesis and critical thinking on the ecological theory.

Moving Animal Physiology from second to third year further simplifies our program at the second year level. Including the changes listed above, Biology students will be required to take 4 second year courses: BIOL 275 (Ecology) and BIOL 266 (Plant Physiology) in fall term and BIOL 205 (Genetics) and BIOL 288 (Cellular Biology) in the winter term. In a student's third year only BIOL 378 will be a required course. In the fourth year, students will come together a final time to take BIOL 402 (Evolution). An additional benefit of these program changes is an increase likelihood of students moving through the degree program as a cohesive cohort, thus enhancing student-to-student relationships.

MOTION 8: To adopt MATH 103 and MATH 112 as an alternative calculus stream in the BSc and BSc Hons in Biology programs (which currently require MATH 110 and MATH 111), and to adopt MATH 103 as an alternative to calculus requirement for the BSc & BSc Hons in Environmental Biology programs (which currently require only MATH 110). Effective Date: 201630

16.11.2.1 BSc in Biology

Refer to §16.6 and §16.9.1 for additional important information.

Credit hours	BSc with Biology major, required courses	Student's record of courses completed
3.0	BIOL 100	
3.0	BIOL 101	
3.0	BIOL 205	
3.0	BIOL 220	
3.0	BIOL 265	
3.0	BIOL 266	
3.0	BIOL 275, 276 or BIOC 220	
3.0	BIOL 275, 276 or BIOC 220	
3.0	BIOL 288	
0.0	BIOL 488 (semester 1)	

0.0	BIOL 488 (semester 2)	
3.0	BIOL 3xx, 4xx or BIOC 221 or above	
3.0	BIOL 3xx, 4xx or BIOC 221 or above	
3.0	BIOL 3xx, 4xx or STAT 342	
3.0	BIOL 3xx or 4xx	
3.0	BIOL 3xx or 4xx	
3.0	BIOL 3xx or 4xx	
3.0	CHEM 104	
3.0	CHEM 105	
3.0	CHEM 140	
3.0	CS 110	
3.0	MATH <u>103</u> or 110	
3.0	MATH 111 or 112	
3.0	PHYS 109 and 119,	
3.0	or PHYS 111 and 112	
3.0	STAT100	
3.0	STAT 200	
75.0	Subtotal: Major Requirements	65% Major GPA required
3.0	ENGL 100	
3.0	ENGL 110	
3.0	Arts or Fine Arts elective	
3.0	Arts or Fine Arts elective	
3.0	Arts or Fine Arts elective	
3.0	Arts or Fine Arts elective	
3.0	Science, Arts, or Fine Arts elective	
3.0	Science, Arts, or Fine Arts elective	
3.0	Science, Arts, or Fine Arts elective	
3.0	Science, Arts, or Fine Arts elective	
3.0	Open elective	
3.0	Open elective	
3.0	Open elective	
3.0	Open elective	
3.0	Open elective	
120.0	Total	65% Program GPA required

16.11.2.2 BSc Honours in Biology

Refer to §16.6 and §16.9.2 for additional important information.

Credit hours	BSc Honours in Biology, required courses	Student's record of courses completed
3.0	BIOL 100	
3.0	BIOL 101	
3.0	BIOL 205	
3.0	BIOL 220	
3.0	BIOL 265	
3.0	BIOL 266	
3.0	BIOL 275, 276 or BIOC 220	
3.0	BIOL 275, 276 or BIOC 220	
3.0	BIOL 288	
0.0	BIOL 488 (semester 1)	
0.0	BIOL 488 (semester 2)	
3.0	BIOL 498	
3.0	BIOL 499	
3.0	BIOL 3xx, 4xx, or BIOC 221 or above	
3.0	BIOL 3xx, 4xx or BIOC 221 or above	
3.0	BIOL 3xx,4xx or STAT 342	
3.0	BIOL 3xx or 4xx	
3.0	BIOL 3xx or 4xx	
3.0	BIOL 3xx or 4xx	
3.0	BIOL 3xx or 4xx	
3.0	CHEM 104	
3.0	CHEM 105	
3.0	CHEM 140	
3.0	CS 110	
3.0	MATH <u>103</u> or <u>110</u>	
3.0	MATH <u>111</u> or <u>112</u>	
3.0	PHYS 109 and 119,	
3.0	or PHYS 111 and 112	
3.0	STAT 100	
3.0	STAT 200	
84.0	Subtotal: Major Requirements	75% Major GPA required
3.0	ENGL 100	
3.0	ENGL 110	
3.0	Arts or Fine Arts elective	

3.0	Arts or Fine Arts elective	
3.0	Arts or Fine Arts elective	
3.0	Arts or Fine Arts elective	
3.0	Open elective	
3.0	Open elective	
3.0	Open elective	
3.0	Open elective	
3.0	Open elective	
3.0	Open elective	
120.0	Total	70% Program GPA required

16.11.2.3 BSc in Biology, Cellular & Molecular Biology Area of Concentration

Refer to §16.6 and §16.9.1 for additional important information.

Credit hours	BSc with Biology major, Cellular & Molecular Biology area of concentration	Student's record of courses completed
3.0	BIOC 220	
3.0	BIOL 100	
3.0	BIOL 101	
3.0	BIOL 205	
3.0	BIOL 220	
3.0	BIOL 265	
3.0	BIOL 266	
3.0	BIOL 275 or BIOL 276	
3.0	BIOL 288	
3.0	BIOL 305	
0.0	BIOL 488 (semester 1)	
0.0	BIOL 488 (semester 2)	
3.0	FIVE courses from: BIOL 302, 303, 315, 366, 390, 395, 401, 402, 405, 406, 410, 455, 465, up to two of BIOC 221, 3xx or 4xx	
3.0		
3.0		
3.0		
3.0		
3.0	CHEM 104	
3.0	CHEM 105	
3.0	CHEM 140	
3.0	CS 110	
3.0	MATH <u>103</u> or 110	
3.0	MATH 111 or <u>112</u>	

3.0	PHYS 109 and 119, or PHYS 111 and 112	
3.0	STAT 100	
3.0	STAT 200	
75.0	Subtotal: Major Requirements	65% Major GPA required
3.0	ENGL 100	
3.0	ENGL 110	
3.0	Arts or Fine Arts elective	
3.0	Arts or Fine Arts elective	
3.0	Arts or Fine Arts elective	
3.0	Arts or Fine Arts elective	
3.0	Science, Arts, or Fine Arts elective	
3.0	Science, Arts, or Fine Arts elective	
3.0	Science, Arts, or Fine Arts elective	
3.0	Science, Arts, or Fine Arts elective	
3.0	Open elective	
3.0	Open elective	
3.0	Open elective	
3.0	Open elective	
3.0	Open elective	
120.0	Total	65% Program GPA required

16.11.2.4 BSc Honours in Biology, Cellular & Molecular Biology Area of Concentration

Refer to §16.6 and §16.9.2 for additional important information.

Credit hours	BSc Honours with Biology major, Cellular & Molecular Biology area of concentration required courses	Student's record of courses completed
3.0	BIOC 220	
3.0	BIOL 100	
3.0	BIOL 101	
3.0	BIOL 205	
3.0	BIOL 220	
3.0	BIOL 265	
3.0	BIOL 266	

3.0	BIOL 275 or BIOL 276	
3.0	BIOL 288	
3.0	BIOL 305	
0.0	BIOL 488 (semester 1)	
0.0	BIOL 488 (semester 2)	
3.0	BIOL 498	
3.0	BIOL 499	
3.0	SIX courses from BIOL 302, 303, 366, 390, 395, 401, 402, 405, 407, 410, 490BG, up to two of BIOC 221, 3xx or 4xx	
3.0		
3.0		
3.0		
3.0		
3.0		
3.0	CHEM 104	
3.0	CHEM 105	
3.0	CHEM 140	
3.0	CS 110	
3.0	MATH <u>103</u> or <u>110</u>	
3.0	MATH <u>111</u> or <u>112</u>	
3.0	PHYS 109 and 119,	
3.0	or PHYS 111 and 112	
3.0	STAT 100	
3.0	STAT 200	
84.0	Subtotal: Major Requirements	75% Major GPA required
3.0	ENGL 100	
3.0	ENGL 110	
3.0	Arts or Fine Arts elective	
3.0	Arts or Fine Arts elective	
3.0	Arts or Fine Arts elective	
3.0	Arts or Fine Arts elective	
3.0	Open elective	
3.0	Open elective	
3.0	Open elective	
3.0	Open elective	
3.0	Open elective	
3.0	Open elective	
120.0	Total	70% Program GPA required

16.11.2.5 BSc in Biology, Ecology & Environmental Biology Area of Concentration

Refer to §16.6 and §16.9.1 for additional important information.

Credit hours	BSc with Biology major, Ecology & Environmental Biology area of concentration	Student's record of courses completed
3.0	BIOL 100	
3.0	BIOL 101	
3.0	BIOL 205	
3.0	BIOL 220	
3.0	BIOL 265	
3.0	BIOL 266	
3.0	BIOL 275	
3.0	BIOL 276	
3.0	BIOL 288	
0.0	BIOL 488 (semester 1)	
0.0	BIOL 488 (semester 2)	
3.0	SIX courses from: BIOL 302, 316, 335, 341 (or 365, 366, 367, 375, 376, 380, 385, 401, 402, 425, 435, 456, 457, 463, 476, 485	
3.0		
3.0		
3.0		
3.0		
3.0		
3.0	CHEM 104	
3.0	CHEM 105	
3.0	CHEM 140	
3.0	CS 110	
3.0	MATH 103 or 110	
3.0	MATH 111 or 112	
3.0	PHYS 109 and 119, or PHYS 111 and	
3.0		
3.0	STAT 100	
3.0	STAT 200	
75.0	Subtotal: Major	65% Major GPA
3.0	ENGL 100	
3.0	ENGL 110	
3.0	Arts or Fine Arts elective	
3.0	Arts or Fine Arts elective	
3.0	Arts or Fine Arts elective	

3.0	Arts or Fine Arts elective	
3.0	Science, Arts, or Fine Arts elective	
3.0	Science, Arts, or Fine Arts elective	
3.0	Science, Arts, or Fine Arts elective	
3.0	Science, Arts, or Fine Arts elective	
3.0	Open elective	
3.0	Open elective	
3.0	Open elective	
3.0	Open elective	
3.0	Open elective	
120.0	Total	65% Program GPA required

6.11.2.6 BSc Honours in Biology, Ecology & Environmental Biology Area of Concentration

Refer to §16.6 and §16.9.2 for additional important information.

Credit hours	BSc Honours in Biology, Ecology & Environmental Biology required courses	Student's record of courses completed
3.0	BIOL 100	
3.0	BIOL 101	
3.0	BIOL 205	
3.0	BIOL 220	
3.0	BIOL 265	
3.0	BIOL 266	
3.0	BIOL 275	
3.0	BIOL 276	
3.0	BIOL 288	
0.0	BIOL 488 (semester 1)	
0.0	BIOL 488 (semester 2)	
3.0	BIOL 498	
3.0	BIOL 499	
3.0	SEVEN courses from:	
3.0	BIOL 302, 316, 335,	
3.0	341 (or STAT 342),	
3.0	365, 366, 367, 375,	
3.0	376, 380, 385, 401,	
3.0	402, 425, 435, 456,	
3.0	457, 463, 476, 485	
3.0	CHEM 104	
3.0	CHEM 105	

3.0	CHEM 140	
3.0	CS 110	
3.0	MATH 103 or 110	
3.0	MATH 111 or 112	
3.0	PHYS 109 and 119,	
3.0	or PHYS 111 and	
3.0	STAT 100	
3.0	STAT 200	
84.0	Subtotal: Major Requirements	75% Major GPA required
3.0	ENGL 100	
3.0	ENGL 110	
3.0	Arts or Fine Arts elective	
3.0	Arts or Fine Arts elective	
3.0	Arts or Fine Arts elective	
3.0	Arts or Fine Arts elective	
3.0	Open elective	
3.0	Open elective	
3.0	Open elective	
3.0	Open elective	
3.0	Open elective	
3.0	Open elective	
120.0	Total	70% Program GPA required

16.11.2.10 BSc in Environmental Biology (Joint Program with Saskatchewan Polytechnic & Lethbridge College)

This is a joint program with Saskatchewan Polytechnic and Lethbridge College. To complete the BSc in Environmental Biology, students must have completed the Diploma of Integrated Resource Management from Saskatchewan Polytechnic or the Diploma in Renewable Resource Management from Lethbridge College with a minimum 60% graduating average and a passing grade in Pre-Calculus 30 or equivalent. Graduation from a similar program may be used for admission to this program and will be reviewed on a case by case basis. Students meeting admission requirements will be granted 60.0 hours of block transfer credit toward this degree program.

Refer to §16.6 and §16.9.1 for additional important information.

Credit hours	Environmental Biology major (University of Regina), required courses	Student's record of courses completed
3.0	BIOL 100	
3.0	BIOL 101	
3.0	BIOL 205	

0.0	BIOL 488 (first semester)	
0.0	BIOL 488 (second semester)	
3.0	THREE courses	
3.0	from:	
3.0	BIOL 316, 335, 341 (or STAT 342), 365, 367, 380, 385, 435, 456, 457, 463, 476, 485	
3.0	CHEM 104	
3.0	CHEM 140	
3.0	GEOG 121	
3.0	GEOG 226	
3.0	GEOG 325, 326 or 327	
3.0	MATH 103 or 110	
3.0	ENGL 100	
3.0	ENGL 110	
3.0	STAT 200	
3.0	Arts, or Fine Arts elective	
3.0	Science, Arts, or Fine Arts elective	
3.0	Science, Arts, or Fine Arts elective	
3.0	Science, Arts, or Fine Arts elective	
60.0	Subtotal	65% U of R GPA required
120.0	Total	

16.11.2.11 BSc Honours in Environmental Biology Joint Program with Saskatchewan Polytechnic & Lethbridge College)

This is a joint program with Saskatchewan Polytechnic and Lethbridge College. To complete the BSc in Environmental Biology, students must have completed the Diploma of Integrated Resource Management from Saskatchewan Polytechnic, or the Diploma in Renewable Resource Management from Lethbridge College with a minimum 60% graduating average and a passing grade in Pre-Calculus 30 or equivalent. Graduation from a similar program may be used for admission to this program and will be reviewed on a case by case basis. Students meeting admission requirements will be granted 60.0 hours of block transfer credit toward this degree program.

Refer to §16.6, §16.9.2, and §16.11.2.10 for additional important information.

Credit hours	Environmental Biology major (University of Regina), required courses	Student's record of courses completed
3.0	BIOL 100	
3.0	BIOL 101	
3.0	BIOL 205	
0.0	BIOL 488 (first semester)	
0.0	BIOL 488 (second semester)	
3.0	BIOL 498	
3.0	BIOL 499	
3.0	FIVE courses from: BIOL 316, 335, 341 (or STAT 342), 365, 367, 380, 385, 435, 456, 457, 463, 476, 485	
3.0		
3.0		
3.0		
3.0		
3.0	CHEM 104	
3.0	CHEM 140	
3.0	GEOG 121	
3.0	GEOG 226	
3.0	GEOG 325, 326, or 327	
3.0	MATH 103 or 110	
3.0	PHYS 109 or 111	
3.0	ENGL 100	
3.0	ENGL 110	
3.0	STAT 200	
3.0	Arts, or Fine Arts elective	
3.0	Science, Arts, or Fine Arts elective	
3.0	Science, Arts, or Fine Arts elective	
3.0	Science, Arts, or Fine Arts elective	
72.0	Subtotal	70% U of R GPA required
132.0	Total	

16.11.2.12 BSc in Environmental Biology (Joint Program with Lakeland College)

This is a joint program with Lakeland College. To complete the BSc in Environmental Biology, students must have completed the Diploma in Wildlife and Fisheries Conservation, or the Diploma in Conservation and Restoration Ecology at Lakeland College with a minimum 60% graduating average and a passing grade in Pre-Calculus 30 or equivalent. Graduation from a similar program may be used for admission to this program and will be reviewed on a case by case basis. Students meeting admission requirements will be granted 60.0 hours of block transfer credit toward this degree program.

Credit hours	Environmental Biology major (University of Regina), required courses	Student's record of courses completed
3.0	BIOL 100	
3.0	BIOL 101	
3.0	BIOL 205	
3.0	BIOL 220	
3.0	ONE of: BIOL 265 or 266	
0.0	BIOL 488 (first semester)	
0.0	BIOL 488 (second semester)	
3.0	THREE courses from:	
3.0	BIOL 316, 335, 341 (or STAT 342), 365, 367, 380, 385, 435, 456, 457, 463, 476, 485	
3.0	GEOG 121	
3.0	GEOG 226	
3.0	GEOG 325, 326 or 327	
3.0	MATH 103 or 110	
3.0	PHYS 109 or 111	
3.0	ENGL 100	
3.0	ENGL 110	
3.0	STAT 200	
3.0	Science, Arts, or Fine Arts elective	
3.0	Science, Arts, or Fine Arts elective	
3.0	Science, Arts, or Fine Arts elective	
3.0	Science, Arts, or Fine Arts elective	
60.0	Subtotal	65% U of R GPA required
120.0	Total	

16.11.2.13 BSc Honours in Environmental Biology (Joint Program with Lakeland College)

This is a joint program with Lakeland College. To complete the BSc in Environmental Biology, students must have completed the Diploma in Wildlife and Fisheries Conservation, or the Diploma in Conservation and Restoration Ecology at Lakeland College with a minimum 60% graduating average and a passing grade in Pre-Calculus 30 or equivalent. Graduation from a similar program may be used for admission to this program and will be reviewed on a case by case basis. Students meeting admission requirements will be granted 60.0 hours of block transfer credit toward this degree program.

Refer to §16.6, §16.9.2, and §16.11.2.10 for additional important information.

Credit hours	Environmental Biology major (University of Regina), required	Student's record of courses completed
3.0	BIOL 100	
3.0	BIOL 101	
3.0	BIOL 205	
3.0	BIOL 220	
3.0	ONE of: BIOL 265, or 266	
0.0	BIOL 488 (first semester)	
0.0	BIOL 488 (second semester)	
3.0	BIOL 498	
3.0	BIOL 499	
3.0	FIVE courses from:	
3.0	BIOL 316, 335, 341	
3.0	(or STAT 342), 365,	
3.0	367, 380, 385, 435,	
3.0	456, 457, 463, 476,	
3.0	485	
3.0	GEOG 121	
3.0	GEOG 226	
3.0	GEOG 325, 326, or 327	
3.0	MATH 103 or 110	
3.0	PHYS 109 or 111	
3.0	ENGL 100	
3.0	ENGL 110	
3.0	STAT 200	
3.0	Science, Arts, or Fine Arts elective	
3.0	Science, Arts, or Fine Arts elective	
3.0	Science, Arts, or Fine Arts elective	
3.0	Science, Arts, or Fine Arts elective	
72.0	Subtotal	70% U of R GPA required
132.0	Total	

(end of motion 8)

Rationale: The Department of Mathematics and Statistics have developed a new calculus stream aimed towards disciplines that need more applied, as opposed to theoretical, calculus. Math 103 and Math 112 (Applied Calculus I and II) are meant to provide an application---based Calculus stream for programs that require a modest level of Calculus, including Biology, Biochemistry, Economics (BA), Geology, Geography, and Psychology. The Joint BSc in Biology and Geography is excluded from this motion because changes to the Math requirements are currently being considered by the Department of Geography.

Item of information: One of our concerns with the new stream was the process surrounding students that enroll in MATH 103 and are “turned on” by math and want to take more advance math courses. The Department of Math and Stats have addressed this by designing the two sequences so that if a student takes MATH 103 and gets 80% or higher and decides that he or she wants to study much more math, then the student will be permitted to take MATH 111 directly (with permission of the Dept Head) without doing MATH 110 first.

MOTION 9: Department of Physics

To update the requirements of the Minor in Physics as Outlined below: Effective 201630

Current:

16.18.2.4 Minor in Physics

Credit hours	Physics minor, required courses	Student's record of courses completed
3.0	PHYS 109 and 119,	
3.0	or PHYS 111 and 112	
3.0	THREE courses	
3.0	from: PHYS 201,	
3.0	202, 242, 261	
3.0	PHYS 3xx or 4xx	
18.0	Sub-total	

Proposed:

16.18.2.4 Minor in Physics

Students are responsible to ensure they have the proper pre-requisites for the classes they take. Any combination of the following may count as a Physics Minor.

Credit hours	Physics minor, required courses	Student's record of courses completed
<u>3.0</u>	<u>PHYS xxx</u> (any class from 109- -- 4xx except 140 or 142)	
<u>3.0</u>	<u>PHYS xxx</u> (any class from 109- -- 4xx except 140 or 142)	
<u>3.0</u>	<u>PHYS 2xx</u>	
<u>3.0</u>	<u>PHYS 2xx</u>	
<u>3.0</u>	<u>PHYS 2xx</u>	
<u>3.0</u>	<u>PHYS 3xx or 4xx</u>	

<u>18.0</u>	<u>Sub---total</u>	<u>65%</u> <u>Program</u>
-------------	--------------------	------------------------------

(end of motion 9)

Rationale: The existing Physics Minor was designed specifically with Science students in mind. The proposed new Minor in Physics is more flexible and can be accessed by all students.

Prepared by:
Coby Stephenson
Registrar's Office

On behalf of:
Liz Domm
Chair

October 20, 2015

Draft Internationalization Plan, 2015-20
University of Regina

Executive Summary

- This draft internationalization plan builds on the University new strategic plan, with the aim of setting key targets and goals to strengthen and enhance four pillars of internationalization by working in an integrated and organic manner.
- First, we recommend that the University develop a strategy for diversifying international enrolments, while increasing the number of international visa students to roughly 14% of the undergraduate population, as well as increasing the number of international graduate students by 20% and the number of ESL students by 35%, as compared to numbers in Fall 2013.
- In order to retain these students and ensure in their success, we believe that the University needs to invest in the creation of appropriate transition and support programming for all international students, including expansion of Global Learning Centre support for those students, and the allocation of resources to the line Faculties teaching these students to aid in the creation of support for these students, and for instructors teaching them. Such investment will repay itself by retaining successful, tuition-paying students.
- Second, we recommend a 25% increase in the number of international experiential learning opportunities for domestic students, with the goal of increasing the total number of students taking advantage of these opportunities by 50%.
- Third, we will work to engage faculty and staff in the process of further and deeper internationalization by increasing international research opportunities, including providing more opportunities for international opportunities for faculty and work exchanges for staff.
- In order for this recommendation to succeed, we will need to provide the funding for travel, and strengthen the recognition for faculty and staff when they contribute to international activities. In addition, we recommend deepening our strong existing international partnerships, as opposed to exploring new ones.
- Fourth, we recommend that by the end of 2020 each major at the University include an opportunity for students to have an internationally focused course within their degree program, with international concepts and methodologies integrated within the curriculum.

Draft Internationalization Plan, 2015-20
University of Regina

This internationalization plan builds on the University of Regina 2015-2020 Strategic Plan, whose objectives include enhancing “services and academic supports to assist international and new Canadian students transitioning to Canada, with particular emphasis on English Language proficiency, Canadian culture, and university expectations” (p. 8), as well as fostering international experiences for our students, faculty and staff, including expanding and promoting “experiential and service learning opportunities, including international learning...” (p. 9). We are also inspired by the overall national and international trend of universities working to develop future global citizens from their faculty and student body by providing them with an international experience on the campus and abroad.

This plan aims to achieve the above goals by identifying key targets and goals that will strengthen and enhance the following four pillars of internationalization:

- Enrolment, retention and success of international students.
- Mobilization of our students to opportunities abroad.
- International opportunities (primarily teaching and research) for faculty and staff.
- Internationalization of the curriculum.

To achieve these goals and take advantage of interactions between the four pillars, we must work in an integrated and organic manner that encompasses both the faculties and administrative units, facilitated primarily by UR International. The recruitment of all international undergraduate students should be a centralized activity coordinated by UR International in partnership with the Faculties and Federated Colleges. UR International will also support the Faculty of Graduate Studies in the recruitment and exchange of international graduate students and the establishment of international agreements. It will also work with the Vice President Research and the Office for Research, Innovation and Partnership to build on our strengths as an international research university in supporting international research opportunities where appropriate.

1. Enrolment, Retention and Success of International Students

Enrolments at the University of Regina have flourished in the last five years from 564 undergraduate visa students at our university, to 1471 undergraduate visa students in Fall 2015 (11.6% of the undergraduate student population). International graduate student numbers have increased from 218 three years ago to 494 in Fall 2015, and have increased their share of graduate student numbers from 15.7% to 28.3% of the graduate student population. In addition, our ESL program has been successful in enrolling 328 full-time students in the EAP program Fall 2015 semester (almost double from 9 years ago), as well as students in customized shorter programs throughout the year.

Our students currently come from more than 60 countries, but our largest cohorts come from China, Nigeria, Saudi Arabia, Vietnam, India, Mexico, Pakistan, South Korea, USA, and Bangladesh. These enrolment increases have been crucial in enhancing and diversifying our student population and tuition revenues, and have also brought our faculties many strong students as well as helping internationalize the experience of our domestic students, but have also brought some challenges related to the cultural differences of the students and their English language preparation.

By the end of 2020, we recommend that the University increase the number of

- Undergraduate international visa students from the current level of 11.6% of the undergraduate population (1471 students) to roughly 14% by fall 2020, an increase of roughly 335 students per regular semester since Fall 2013.
- Graduate international students by 20% (roughly 85 students per regular semester).
- Students in the Regular ESL program by 35% (roughly 100 students per 13-week semester).
- Students in the customized (short-term) ESL programs by 50% (roughly 150 students in total, each in 3-5 week programs).

The primary destination faculties and programs for current students, both graduate and undergraduate, reflects international demand:

- Business, Engineering, Nursing, Kinesiology and Health Studies, Justice and Police Studies, Social Work, Education.
- Computer Science, Economics, Film, Geology.
- ESL program short and long term.

We recommend working to diversify our recruitment strategy for international students. Based on a review of our international undergraduate enrolment data, we will focus on recruiting

- Into faculties and programs that are under-subscribed.
- Students that have a higher change of retention and success.
- Students from cohorts that traditionally have a better GPA at the University.

Turning to retention and student success, based on the University's experiences over the last several years, and based on feedback and consultations, we see a strong academic and business case for investing more in the success of our international students after arrival in Regina. This investment should include expanding the services provided centrally by UR International and the Student Success Centre, but crucially it should also include direct support for line Faculties teaching international and domestic ESL-speaking students. (See Appendix II for a partial list of current academic and non-academic supports for international students.) If we invest more in our students' success, we will be more than repaid, most importantly by our students' improved success rates, but also monetarily. We will save costs from less needed future intervention with these students; we will improve our reputation as a university where students can succeed, improving student recruitment; and we will retain more students who will continue taking classes and pay more tuition.

In order to meet our targets to increase the recruitment, retention and success of international visa students and domestic ESL-speaking students, we propose that the University consider the following resource allocations and policy changes:

- Maintain and expand the Global Learning Centre and all of its programs (see Appendix II for a partial listing of current programs).
- Provide UR International with more resources to open and consolidate recruitment markets.
- The University will work to create more coordinated recruiting and marketing between UR International and the Faculty of Graduate Studies and Research.
- Building on existing academic support programs in partnership with the Faculties, provide more support in these areas to the line Faculties and departments, both the Faculties that the students major in, as well as the Faculties where they take their key elective courses. This support will include specialized programs (such as the Academic Recovery Program and the Arts Transitions Program), more advising support, more instructors (and related supports) if appropriate, more laboratory space in affected areas, more support for teaching international visa students and domestic ESL-speaking students.¹
- We also recommend providing the Faculty of Graduate Studies with resources continue and where appropriate to expand targeted graduate scholarships for international students to offset the increased financial burden of higher fees for international students on faculty members and also provide needed resources to handle the increasing number of international applications.
- Work to change Faculty criteria documents to reflect positive support for internationalization work.
- CCE/ESL will be generally be self-supporting due to its cost-recovery nature, but currently faces classroom and office capacity and most especially instructor capacity constraints, and will need access to more of each if it is to expand as envisioned.
- Expand residences, food services and prayer space for international students, including more services 24/7 and 365 days per year.²
- It is recommended that we carry out a thorough re-examination of our scholarships, with a goal of considering a focus on specialized discounts for high level students and increasing the accessibility of international students to scholarships.
- The labels/names of many of our degree programs are sometimes confusing to international students – we recommend the development of a concordance mapping our programs to the names of identical or similar programs.

¹ It should be noted there are many domestic students struggling with English as a Second Language in addition to international students.

² Although it is potentially a large and complex project, we recommend that the University consider the creation of student family housing, with minimum space held for international students with families. Such support will help the transition of international students with families.

2. Mobilization of Domestic Students to More Opportunities Abroad

It is our responsibility as a University to provide our students with a Global Education, that gives them the skills and experience to enter a highly diverse and competitive job market. In the last three years the University of Regina has increased dramatically the number of students going to study abroad from 30 in 2009, to 450 in 2013. The increase has been remarkable, however we must continue to promote the study abroad experiences to all our students, to increase the number even more.³

By the end of 2020, compared to Fall 2013 we will increase the number of

- International experiential learning opportunities (study, work and volunteer) for domestic students by 25%.
- In addition, work with the Faculties to increase the number of students participating in those international experiential learning opportunities by 50%.

3. International Opportunities

International opportunities for faculty members (and staff) to do research, to teach and to do exchanges with University partners around the world will help to engage faculty members and staff in the process of further and deeper internationalization and create their support for that process.

An important, indeed critical, component of these international opportunities are international research opportunities.⁴ The cross-fertilization of research ideas, data, and methods contributes to a broader understanding of the globe as well as a better understanding of our own domestic context. Establishing these partnerships is complex and often initially done organically between researchers, but is more likely to be successful if supported by a coordinated and strategic effort between the researchers, their faculties, the Vice President Research, UR International, and the Office of Research Innovation & Partnership.

By the end of 2020, compared to Fall 2013 we will

- Double the number of international research partnerships for faculty.
- Increase by 25% the number of publications with international partners.
- Increase by 25% the number of grants with international partners.
- Increase by 25% the international sabbatical and visiting scholar opportunities for faculty (using our strategic partnerships around the world).
- Increase the awareness of the University's international research profile.
- Provide the opportunity for at least 5-10 non-academic staff a year to engage in work exchanges that can enhance their work with internationalization.

³ The University of Regina International has currently \$270,000 in scholarships for students seeking experiences abroad the vast majority of students who obtain this funding are students traveling with a professor as part of a class.

⁴ This section draws upon documentation provided by the Vice-President Research.

These goals will imply the need for:

- More direct funding for travel to allow affordable opportunities for faculty and staff.
- Tracking the number of publications, grants, and other forms of collaborations with international partners in order to document and promote our international research activity.
- Strengthening of recognition for faculty and staff of their international activities and development projects, including special recognition by Faculty peer review committees of the importance of international research projects.
- Stronger linkages between faculty members with international research programs and links to international universities and institutions and UR International, with the goal of bringing these faculties members and their linkages into the operational planning of UR International.

Our current international opportunities for students, faculty and staff draw upon our longstanding partnerships around the world. The range of partnership encompasses universities, government and funding agencies, industry among others. Within more than 161 active agreements in the world, we recommend working on expanding these programs as opposed to exploring new programs. In addition, there are undergraduate and graduate degree programs that could be deepened and expanded to give more to the University of Regina and its partners. For example, with the development of exchange and articulation agreements bringing students from around the world to our campus, we are well prepared to consider deeper, transnational partnerships. Such partnerships could involve articulation agreements where University of Regina programs are entirely delivered to students on the campuses of institutions abroad.

4. Internationalization of the Curriculum

The internationalization of the curriculum happens when all of the above are well communicated to faculty and staff and when there are real opportunities presented to all parties at the University. This is the result of an engaged faculty who enjoys and benefits from international partnerships, projects, research and students. In order to achieve this stage we must work together to achieve the first three goals of our plan in a consistent and systematic way that delivers clear results in an organized structure.

By the end of 2020, every major in the University of Regina will

- Include an opportunity for students to include an internationally focused course within their degree program.
- Integrate international concepts and methodologies within their curriculum.

Both increased internationalization of the curriculum and more Study Abroad participation would be encouraged by the promotion of the learning of international languages. We recommend the further development of concentrations or clusters of international languages and culture.

The resource implications of these recommendations primarily include the time of faculty and staff related to curriculum reform within the faculties and Registrar's Office, as well as the costs of updating calendars and websites. However, depending on the state of current library resources, those may need to be supplemented as well.

With development of exchange and articulation agreements bringing students from around the world to our campus, we are well prepared to consider deeper, transnational partnerships. Such partnerships would involve articulation agreements where University of Regina programs are entirely delivered to students on the campuses of institutions abroad. Faculty from the University of Regina and the partnered institution would provide in-class content towards satisfying University of Regina degree requirements to students registered in our programs, without the need for students to be on the University of Regina campus.

We recommend that the University strike a small task force to explore the costs, benefits and risks of developing and delivering off-shore University of Regina programs.

Livia Castellanos and Harvey King

(With advice from Andrew Gaudes, David deMontigny, Franzvolker Greifenhagen, Shanthi Johnson, Hairuo Qing, Armin Eberlein, Monika Çule, Shaun Fallat)

Appendix I Consultations

University Executive Team
Deans' Council
First Nations University Academic Council
Faculty of Engineering
Faculty of Science
Faculty of Arts
Faculty of Fine Arts
Faculty of Business Administration
Faculty of Education
Faculty of Kinesiology and Health Studies
ESL Division, Centre for Continuing Education
Johnson-Shoyama Graduate School of Public Policy
Luther College Academic Council
Faculty of Nursing
Faculty of Social Work

We have also attended presentations and seminars by the provincial government on their goals and plans for international students in Saskatchewan.

Appendix II Existing Academic and Transitions Supports

a) Academic Support Programs currently offered to International Students

Global Learning Centre, CW 115 (UR International)

The Global Learning Centre is the facility designed to assist all international students with their academic and non-academic needs. This includes free, focused English language services, as well as organizing activities and events for successfully transitioning and adjusting to learning in a new post-secondary environment at the University of Regina.

English Coaching (UR International)

Students have the opportunity to book 30-minute individual coaching appointments with senior University of Regina students to receive assistance with questions regarding assignments, essays, and the English language.

Walk-in Hour (UR International)

Walk-in Hour gives students a one-on-one opportunity to receive English Coaching or assistance with their questions regarding school work or the English language.

Conversation One-on-One (UR International)

Students can book daily individual appointments to strengthen and advance their English language conversation skills with one of our senior student volunteers.

Conversation Club (UR International)

Conversation Club is a daily group setting for students to join, in which they are given the opportunity to meet other students and participate in activities that will assist with their group English conversation skills. Daily topics are planned and relate to Canadian culture, common practices in health and safety, and language uses

Study Assistance (UR International)

University of Regina international students who give back to the campus community by providing free study assistance with various university subjects, such as Math, Computer Science, Statistics, Economics, Japanese, Korean, etc.

Workshops (UR International in partnership with faculties)

In coordination with other faculties and units on campus, URI has created several workshops that are available for students to attend. Some of the workshops include: Undergraduate Rights & Responsibilities, Graduate Rights & Responsibilities, What is Plagiarism?, How to Avoid Plagiarism, Grammar 1 & 2, Critical Writing, Citation & Quotation, and Poetry Analysis.

English Needs Assessment Test

(UR International, in coordination with the English and ESL departments)

This test is implemented each semester in English 100 classes, with the aim of evaluating specific categories of students and assessing the English proficiency of University of Regina undergraduate students, and finding out where students' English skills are lacking the most. The test is in four (4) sections: Reading, Listening, Writing, and Grammar. Upon completion, the tests are marked and data is collected and evaluated, determining which categories of students require the most assistance. The continued development and implementation of an exam such as this provides yet another opportunity to assist our students by way of assessing their needs and then ensure that they are enrolled in courses that would allow them to excel and be successful as a student.

ARTS 010**(Faculty of Arts, jointly with UR International and the Student Success Centre)**

This non-credit academic reading strategies course is offered to students at no cost and is designed to foster critical reading skills in undergraduate students which can be applied in their additional courses. It is open to any undergraduate students, both domestic and international, who wish to improve their critical reading skills as part of preparation for future English courses or if they are enrolled in the Academic Recovery Program.

Academic Recovery Program (Student Success Centre)

For international and domestic students who are placed on forced withdrawal or are on academic probation, this program provides them with the opportunity to improve their academic situation over 2 semesters, and potentially increase student academic success. Students who choose this option acknowledge having their probation extended during the length of the program. The benefit for our students is that, by enrolling in this program, they will be able to maintain their full-time academic status and continue to be eligible for student loans, scholarships, and visa and study permit applications.

Arts Transition Program**(Faculty of Arts with UR International and the Student Success Centre)**

This collaborative program between UR International and the Student Success Centre assists students who are in the process of transferring into the Faculty of Arts due to their academic standing. Students who qualify for ATP will learn the skills required in order to be successful as an Arts student via a series of requires courses, workshops, and sessions that are designed to facilitate the students' learning in regards to cultural, social, and academic abilities. In order to successfully complete this program, students must achieve a minimum grade of 60% in each course, attend all scheduled workshops, complete weekly reflection journals, and receive a P (pass) in ARTS 010.

ESL Fundamentals for Success

These are part-time, paid evening classes. Fundamentals for Communicative Success works on listening and speaking skills, while Fundamental for Writing Success working on writing skills, including grammar and style. ESL is also developing a UR Transition "Fundamentals for University Success" program for incoming credit students, to be offered half-days in the latter half of August 2016.

b) UR International's Current Non-Academic Support Programs

Life Skills Advisors assist with academic support by connecting students with their faculty and Academic Advisors; assist with a wide variety of non-academic needs, such as guiding students in maintaining their status in Canada, finding housing, being of assistance in emergency situations, and answering general questions about life in Canada; facilitate obtaining of a Saskatchewan Health Card. They are available to assist students with emergencies 24 hours a day, 7 days per week.

Airport Welcome Booth

Student volunteers greet our new international students at the Regina International Airport each Fall and Winter semester.

Orientation Day

This free, day-long event provides new international ESL, Undergraduate, and Graduate students with all of the information they will need in order to be academically successful.

Orientation day begins with offering our students a chance to meet other international undergraduate, graduate, and ESL students, as well as their deans, academic advisors, and staff from other units on campus, and also to learn about what services are available for them.

International Peer Advisor Program

Our International Peer Advisors are connected with new and current international students and are a resource for navigating the U of R. They provide valuable information and support to our new international students and are motivated to assist them with their successful transition to their new life at the U of R.

Student Associations, Societies & Clubs

Year round, our office assists with the facilitation, organization, and promotion of events and sessions that are held by student associations and clubs on campus. Numerous events are organized each semester, including the Chinese Festival, International Night, and Lunch & Learns, which are open to all of our students, both international and domestic, new and current.

Living Learning Communities (LLC)

Coordinated with Residence Services, our Living Learning Communities strive to provide forums for themed programming and valuable resources for students with similar interests, personal values, and academic goals. These communities allow students with shared interests to live together and form meaningful connections on campus and within the community.