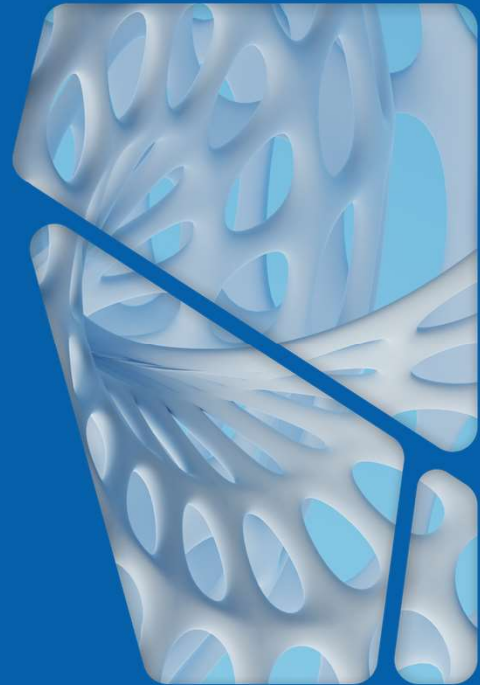




Supporting Collaborative Research and Innovation

Presented by:
Fatima Dargah, PhD
 Senior Advisor – Business Development
 University of Regina
 March 22, 2024



Purpose

Mitacs **empowers** Canadian innovation through partnerships that deliver solutions to our most pressing problems. We drive economic growth, productivity, and meaningful change to improve quality of life for all Canadians.

Vision

Canadian innovation will create change that transforms the world.

Mission

Mitacs is a **catalyzing force** in the Canadian innovation ecosystem. We will build a world-class, diverse community of innovators through our collaborative model, attracting and deploying top talent to industry, and matching need with expertise to create ambitious solutions to real-world challenges.





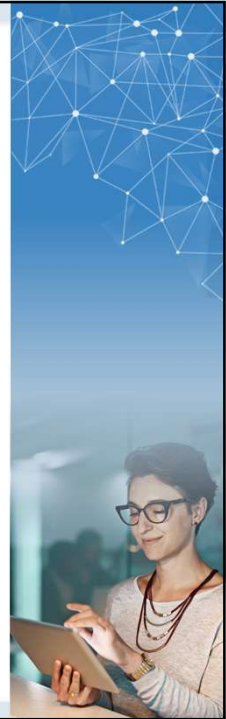
- \$1B+ invested in collaborative research since 2010
- 189 post-secondary partners in Canada
- 25 years in operation
- 54 funding agreements with international partners from 25 countries and the European Union
- 11,990 private sector and not-for-profit partners since 2008
- 16k+ projects delivered since 2008
- \$226M+ in government funding for 2022-23
- 100+ advisors for personalized support

How we do it?

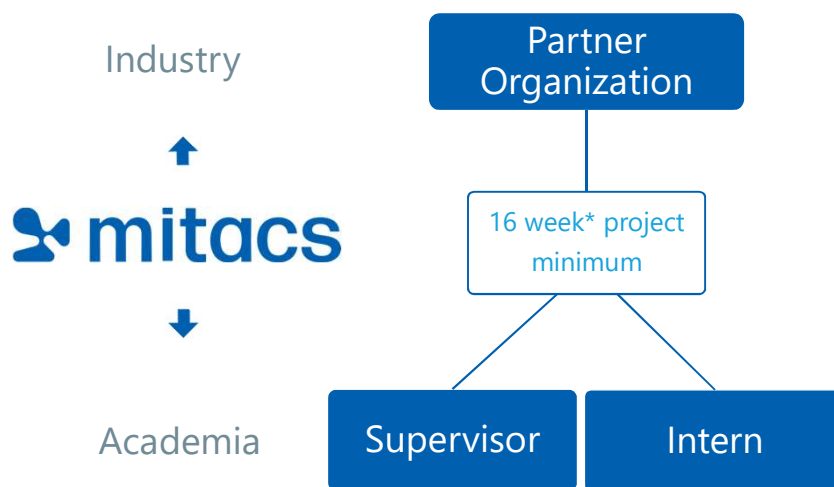
300 staff, 30+ offices, 4 regional hubs:
Vancouver | Toronto | Montréal | Ottawa

The benefits to you

- ✓ Support students and postdoctoral fellows without using existing budgets
- ✓ Build partnerships, create additional exposure and knowledge
- ✓ Publications/ Thesis
- ✓ High application success rate (> 95%), non-competitive funding
- ✓ Open to disciplines which may not have traditional industry connections or other sources of funds (e.g. SS+H)
- ✓ Provide work-integrated learning opportunities to students to better prepare them for Canadian workforce.



How it works



Eligible partners



Businesses



Not-for-profit organizations



Municipalities



Hospitals



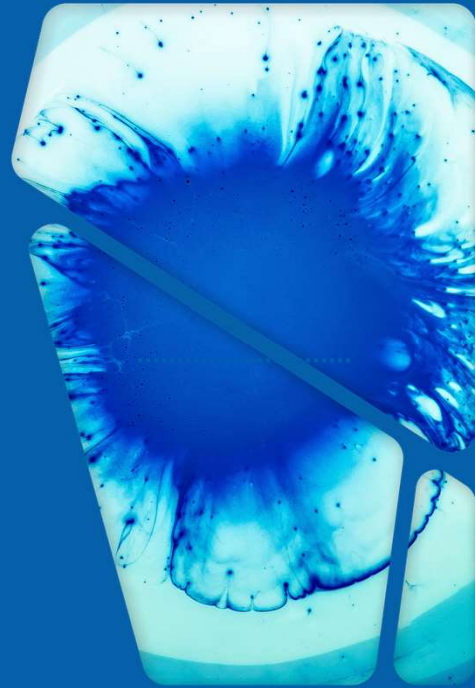
Flagship Programs

ACCELERATE

National and international research collaborations

BSI

Business strategy internship – for non-research/development projects








mitacs

Accelerate

For research projects

Mitacs Accelerate

Applied research collaborations between researchers & Canadian and international companies and not-for-profit organizations		Open to academic institutions across the country
Participation of students and postdocs in scalable internship modules of 4 to 6 months		Open to all academic disciplines
	No competition Applications are accepted any time	



mitacs.ca | 10

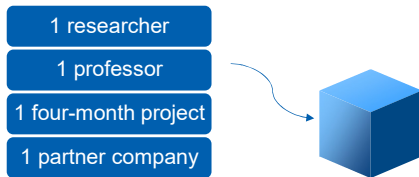
R&D: Mitacs Accelerate



An intern spends a minimum of 4-to-6 months — or **one unit** — on a project

The intern spends a minimum of **25% of their time** at the partner organization site

A single module



\$15,000
\$7,500 – from
Partner

\$10,000
Minimum Stipend

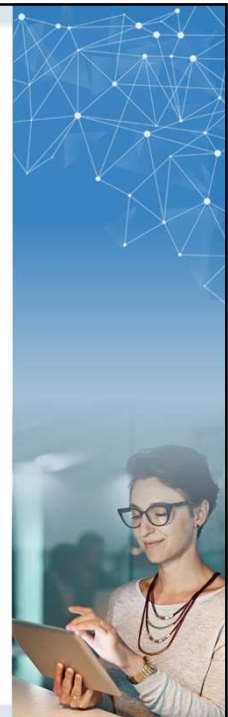
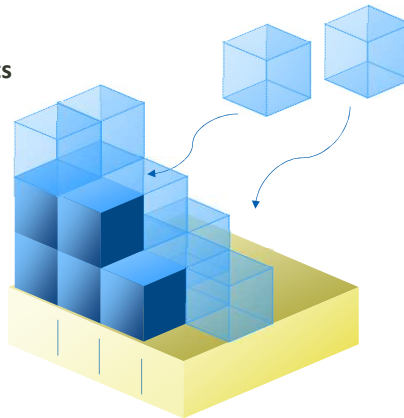
\$5,000
Project support



Mitacs Accelerate

Researchers can do **multiple** 4-to-6-month units

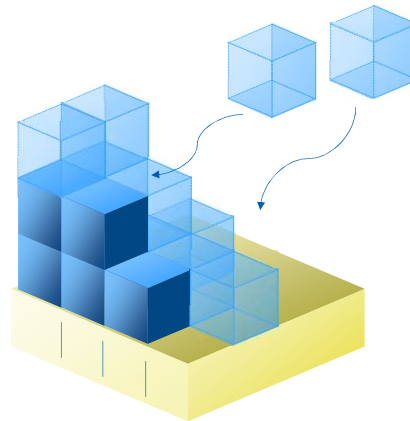
- Undergrads & Recent Grads* up to **3 units**
(over a 12–18-month period)
- Master's up to **6 units**
(over a 16–24 month period)
- PhD's up to **12 units**
(over a 32–48 month period)
- Postdocs up to **9 units**
(over a 36 month period)



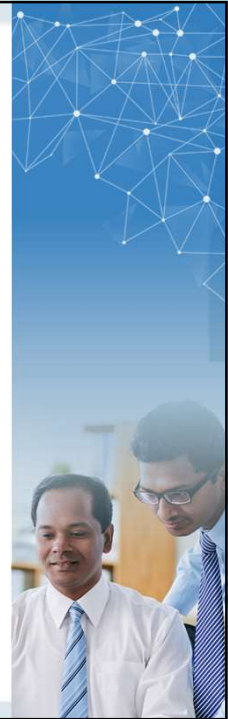
We adapt to your pace and pressing challenges

and scale up...

- Add as many 4-month units as you need
- No cap on size
- Add many interns
- Tackle more complex projects
- Achieve long term goals



 mitacs
mitacs.ca | 13



Mitacs Accelerate—strategic national partners

Streamlined joint application process available for projects involving other funding agencies and Mitacs Accelerate internships.



SSHRC  CRSH



 mitacs

NSERC Alliance – Mitacs Accelerate joint application

NSERC-Mitacs JI (2:1)



 mitacs

SSHRC – Mitacs Joint Streamlined Application (After SSHRC is approved)

- **Mitacs leverage industry partner's cash contribution in a SSHRC Partnership grant at 1:1 ratio**
- **Streamlined review by SSHRC only**
- **Both agencies can make independent decisions**
- **Adding new industry partners after the SSHRC grant is approved is usually allowed.**

 mitacs

NEW! SSHRC-Mitacs Joint Initiative

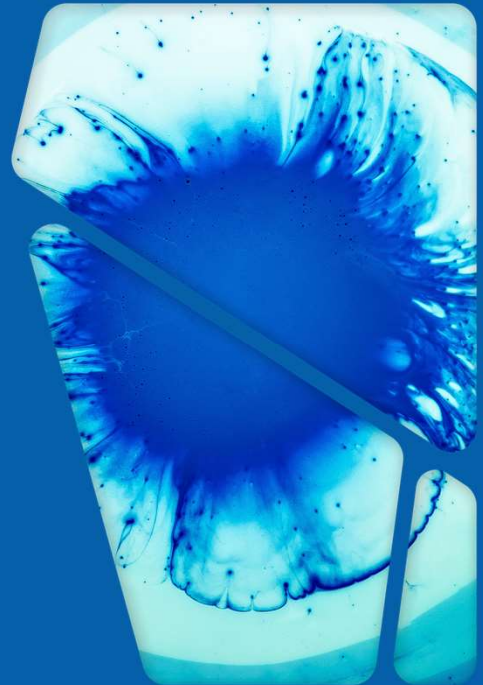
Starting 2023-24, SSHRC applicants (PEG, PDG, PG-S2, IG) can simultaneously apply for Mitacs Accelerate internships (IDG in 2024-25)

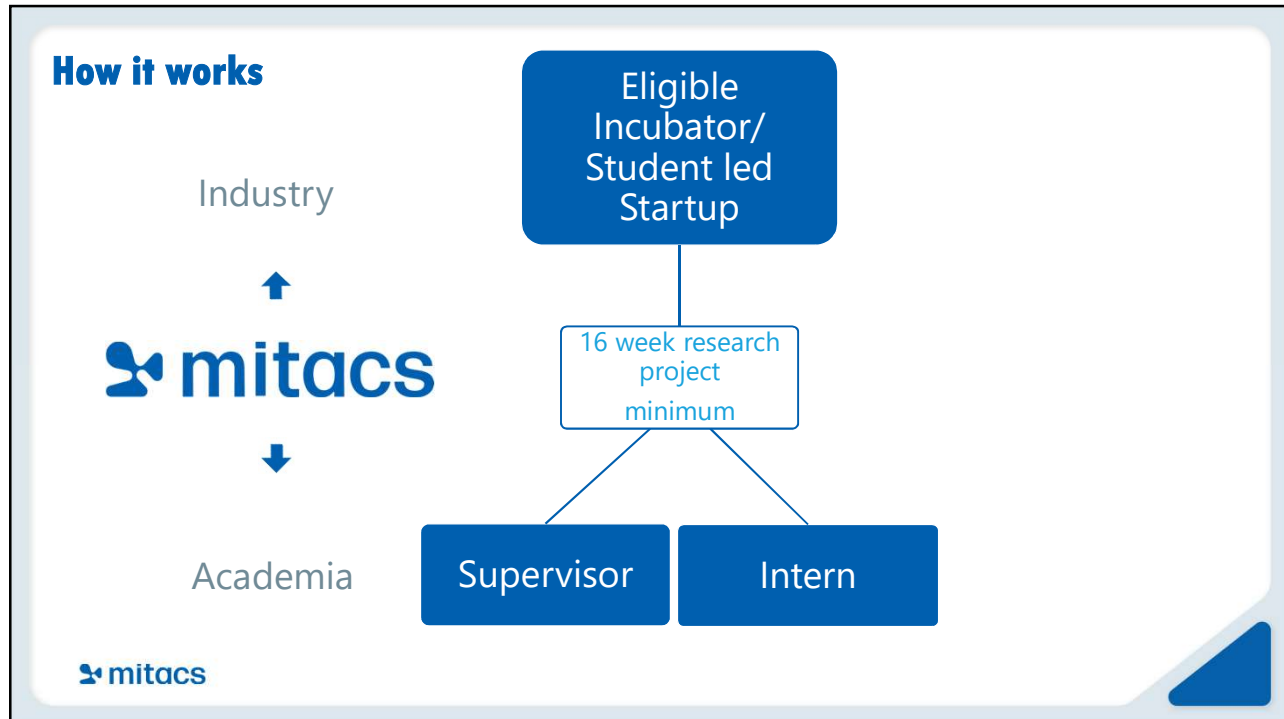
- **Who can apply:** All disciplines, all levels - from College to Post Doc
- **When to apply:** SSHRC competition dates + continuous intake of Mitacs apps to complement existing SSHRC projects with non-academic partners (PDG, PG)
- **Parallel Merit review:**
 - SSHRC considers Mitacs internships as part of training and mentoring plans of SSHRC apps (can be included in SSHRC budget)
 - Mitacs considers SSHRC app/adjudication results in its own decisions
- **Accelerate success rate: 95% for eligible apps. Mitacs internships available on SSHRC-recommended projects (both funded and unfunded applications)**

17

The Mitacs logo, consisting of a stylized 'M' icon followed by the word 'mitacs' in lowercase.

Accelerate Entrepreneur





Accelerate Entrepreneur

student entrepreneurs can:

- Develop their ideas in their own start-up companies
- Receive industrial mentorship through a linked incubator
- Receive support via Mitacs Accelerate program
- Entrepreneur/intern provides matching funds

The slide features a collage of images on the right side. At the top is a blue background with a white network diagram. Below that is a photo of a student entrepreneur with colorful icons around their head. At the bottom right is a photo of three people in a meeting, with one person gesturing while speaking.

mitacs + **CULTIVATOR**
POWERED BY CONEXUS

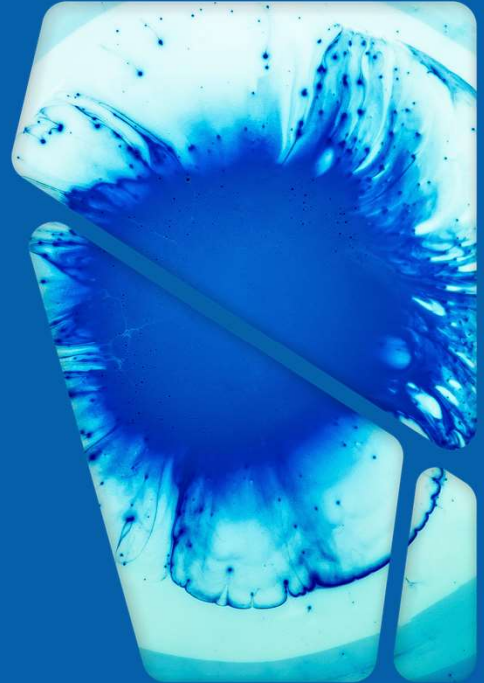
STUDENT ENTREPRENEUR

mitacs
Mitacs.ca | 20



Business Strategy Internship (BSI)

For Innovation Projects (non-research)



Mitacs Business Strategy Internships

Innovation Projects: Intern(s) helps an organization to innovate by improving products, processes, materials, systems, or services



Choice of **\$10K or \$15k** intern stipend per unit

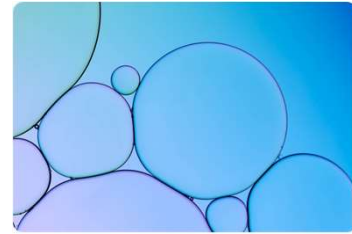


Industry partner contributes **50%**

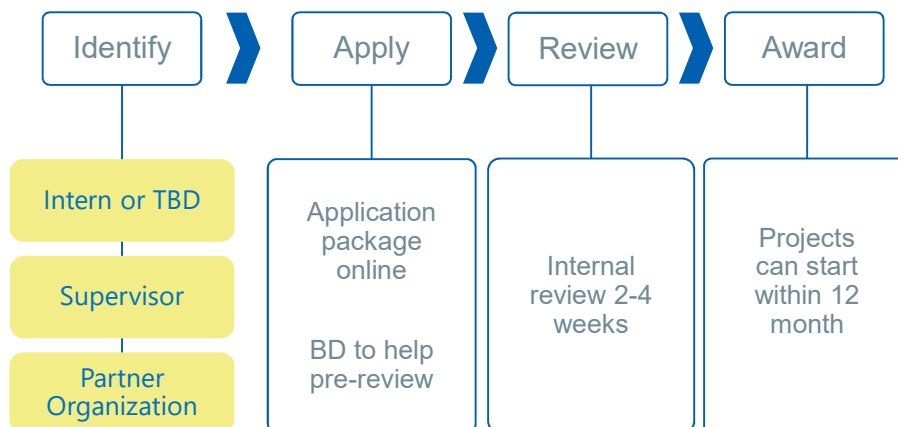


BSI use cases

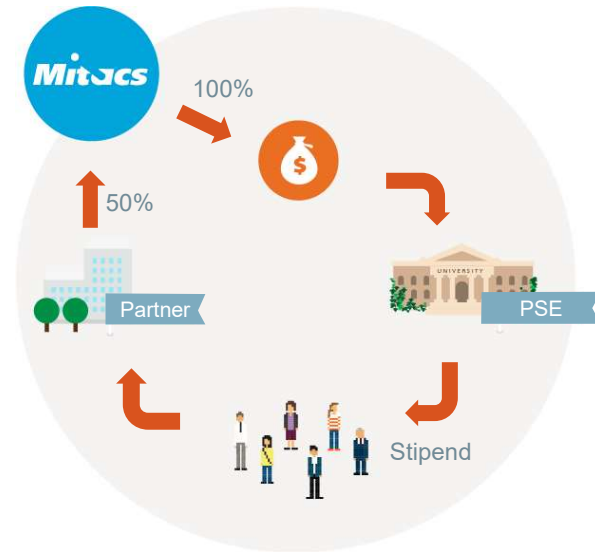
- *Developing new business models for Canadian companies*
- *Improving public services (e.g. transportation infrastructure, utilities, healthcare) in Canada*
- *Contributing new solutions to community challenges in Canada*
- *Addressing social or environmental issues important to Canadian society*
- *Advancing new approaches to include under-represented groups in the knowledge economy*
- *Working towards a more equal and equitable Canada*



The process

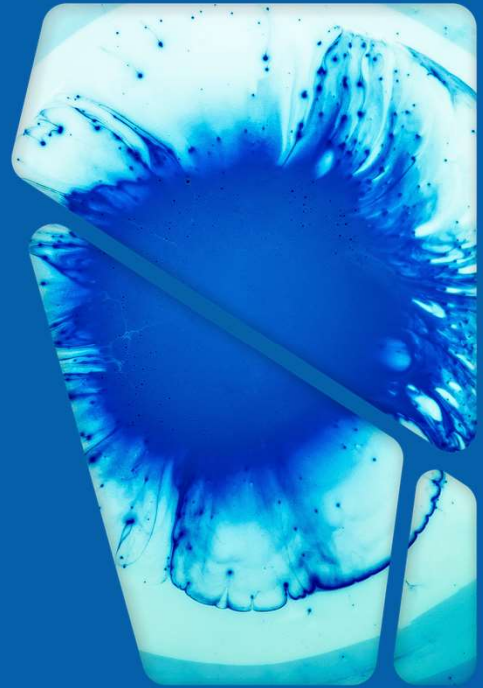


How the funding flows

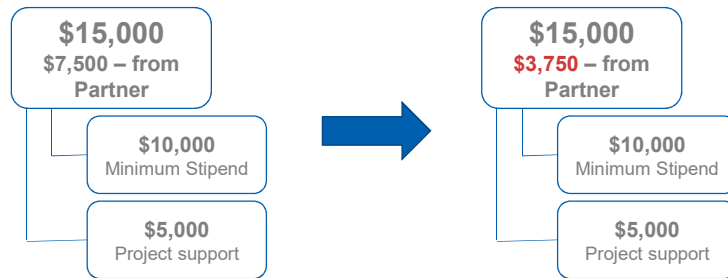


Indigenous Pathways to Innovation

committed to working with **Indigenous peoples** and creating equitable access to programs



Indigenous Pathways to Innovation



Reduces the required **partner contribution by HALF!**

Partners only pay 25% of the cost of a Mitacs project

Applies to the entire project up to 50 units

No application deadline!



27

Indigenous Pathways to Innovation

Eligibility

- The partner organization must be **50%+ owned by an individual that self-identifies as Indigenous**
- Or
- **Not-for-profit organizations are also eligible** if their board of directors is composed of at least **50% self-identified Indigenous people, or if the mandate of the organization is Indigenous focused**
- Or
- The selected **intern must self-identify as Indigenous**
- *Indigenous interns in Manitoba will receive a top-up of \$2,250/unit stipend with no additional costs to the partner*



28

Thanks to our funding partners

Canada 



Thank you

Fatima Dargah

C: 306.201.9886 | E: fdargah@mitacs.ca

O: Room 227.38, Research office, Centre for Kinesiology, University of Regina, 3737 Wascana Parkway, Regina, SK, S4S 0A2

mitacs.ca

