

Sociology 319
January 16, 2006

1. Traditional and modern compared with pattern variables of Parsons

Marx/Durkheim/Weber/Simmel

Traditional	Modern	Aspect
use value	exchange value	production
similarity	difference	social life
mechanical solidarity	organic solidarity	social solidarity
repressive/penal law	restitutive/restorative law	systems of law
tradition/charisma	rational/legal	society/politics
community/rural	self and individual/urban	sociation

Parsons

Traditional	Modern	Aspect
affectivity	affective neutrality	emotion/affect
collectivity/selfless	self/selfish	interest
particularistic	universalistic	range of people
diffuseness	specificity	range of obligations
ascription/quality	achievement/performance	life chances
Expressive – integration and tension resolving	Instrumental – goal attainment and adaptation	system/society

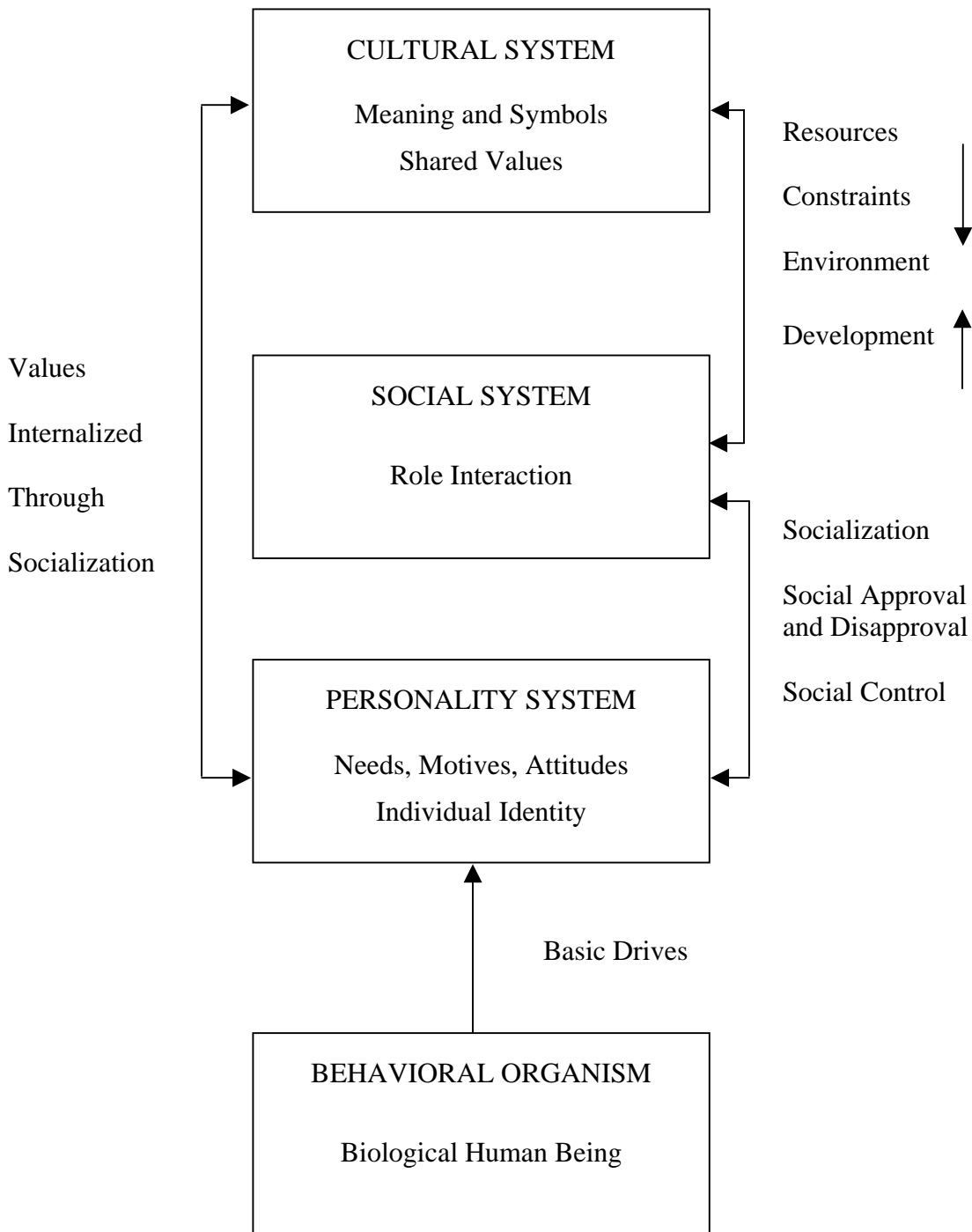
Quotes from Talcott Parsons, *The Social System*, New York, Free Press, 1951. HM51 P35

A social system consists in a plurality of individual actors interacting with each other in a situation which has at least a physical or environmental aspect, actors who are motivated in terms of a tendency to the “optimization of gratification” and whose relation to their situations, including each other, is defined and mediated in terms of a system of culturally structured and shared symbols (pp. 5-6).

Without deliberate planning on anyone's part, there have developed in our type of social system, and correspondingly in others, mechanisms which, within limits, are capable of forestalling and reversing the deep-lying tendencies for deviance to get into the vicious circle phase which puts it beyond the control of ordinary approval-disapproval and reward-punishment sanctions (pp. 319-320).

2. Action Systems of Parsons

Compare with reading “Action Systems and Social Systems”

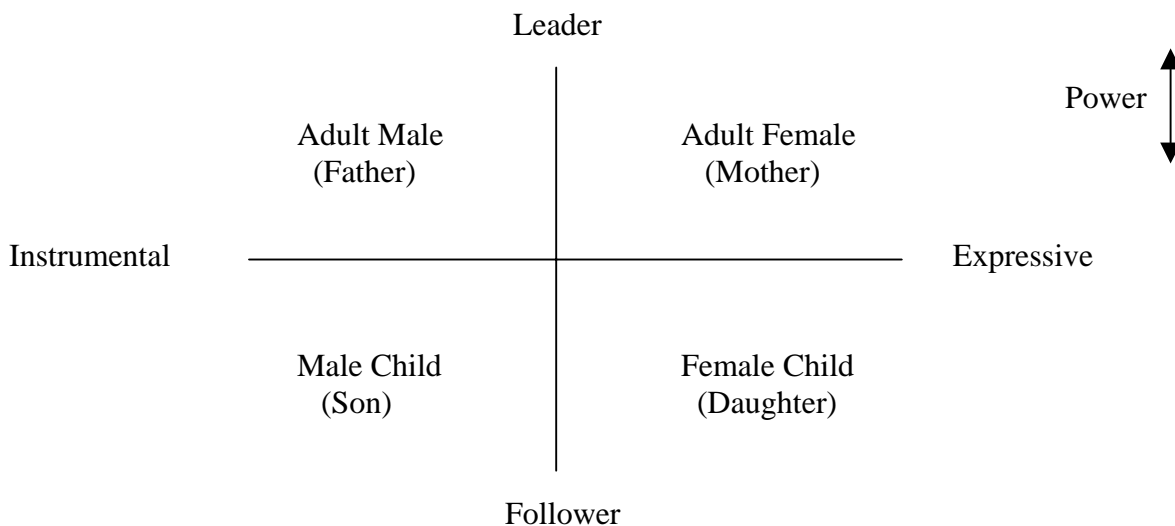


3. AGIL(P) scheme of social systems

	Instrumental	Consummatory
External	A – Adaptive. Economy	G – Goal attainment. Polity
Internal	L (P) – Latent or pattern maintenance and tension management. Family, schools	I – Integration. Societal community, law

Source: Modified from Adams, Bert N. and R. A. Sydie, *Contemporary Sociological Theory*, p. 17 and George Ritzer, *Sociological Theory*, fourth edition, New York, McGraw-Hill, 1996, p. 244.

4. Model of nuclear family in approach of Parsons



Source: D. H. J. Morgan, *Social Theory and the Family*, London, Routledge and Kegan Paul, 1975, p. 29.